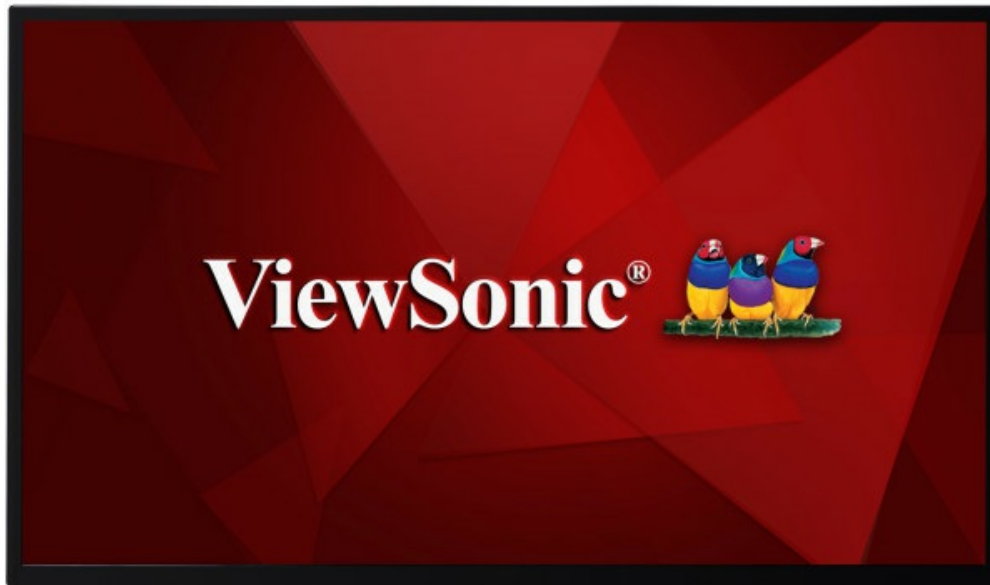


32 inch Full HD Enhanced Viewing Comfort USB Playback Commercial Display



CDE3205-EP



The ViewSonic CDE3205-EP is a great value 32" (31.5" viewable) Full HD LED commercial display with high reliability working time 16 hours per day/7 days a week for retail, hospitality, and QSR (Quick Service Restaurant) environments. In addition to versatile connectivity options, including HDMI, VGA, DVI, YPbPr, USB, IR, RJ45, the display comes with a convenient USB multimedia playback functionality. With 1920 x 1080 resolution, 350-nit brightness, IPS 178-degree wide viewing angles and 2 x 10W stereo speakers, the slim-bezel CDE3205-EP delivers vivid images and remarkable sound for superior multimedia performance. The HDMI CEC pass-through support provides one control for multiple HDMI-connected devices while the free-bundled vController software makes remote display management easier via RSS232/RJ45 port. Creating a more comfortable viewing experience, the display is equipped with Blue Light Filter technology.

Integrated USB Multimedia Player *USB playback photos, music & video*

This display features an integrated media player with a convenient USB playback function. Now photos, music, and 1080p video can be quickly displayed on-screen directly from a USB drive – without the need for a PC.



vController™ Software: Remote Display Management ***software: remote display management***

Remote display management without needing to type in commands. By using an RS232 or RJ45 connection between a computer and digital signage, users can manage the signage's OSD settings such as On/Off, display signal source, audio, and other general items.



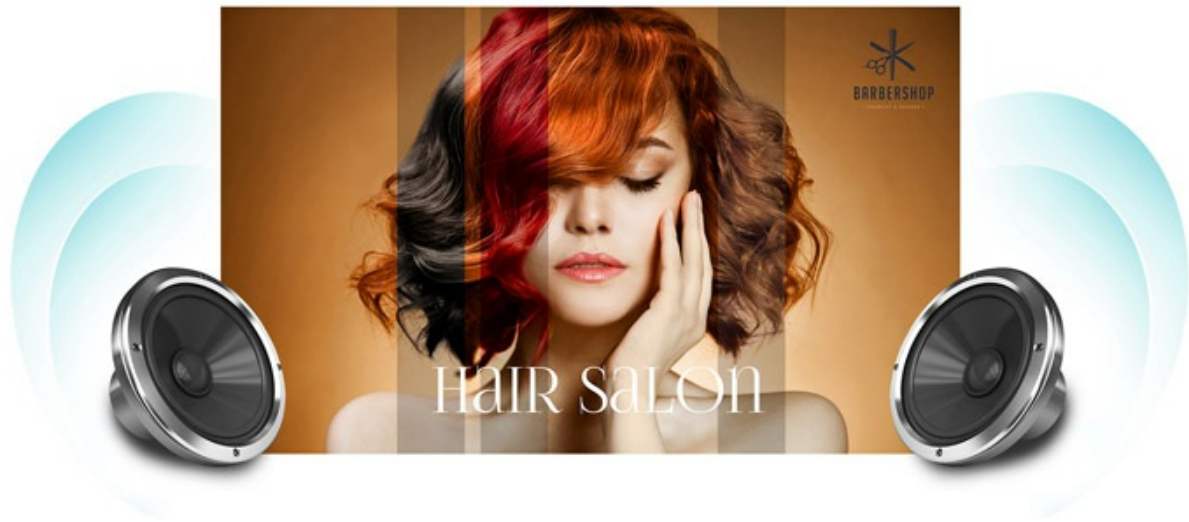
Control Multiple HDMI Devices *HDMI CEC local control*

With HDMI CEC functionality, remote controller signals can be transmitted via HDMI cable to connected HDMI devices. This enables out-of-sight DVD players, sound systems, and other devices to be directly controlled with the display's remote controller.



Broadcast Multimedia without External Speakers *Dual speakers 20W*

The powerful enough 20W sound pressure level from 2 speakers deliver incredible sound while combining eye-catching multimedia content - creating a lasting audio-visual impression on your audience.



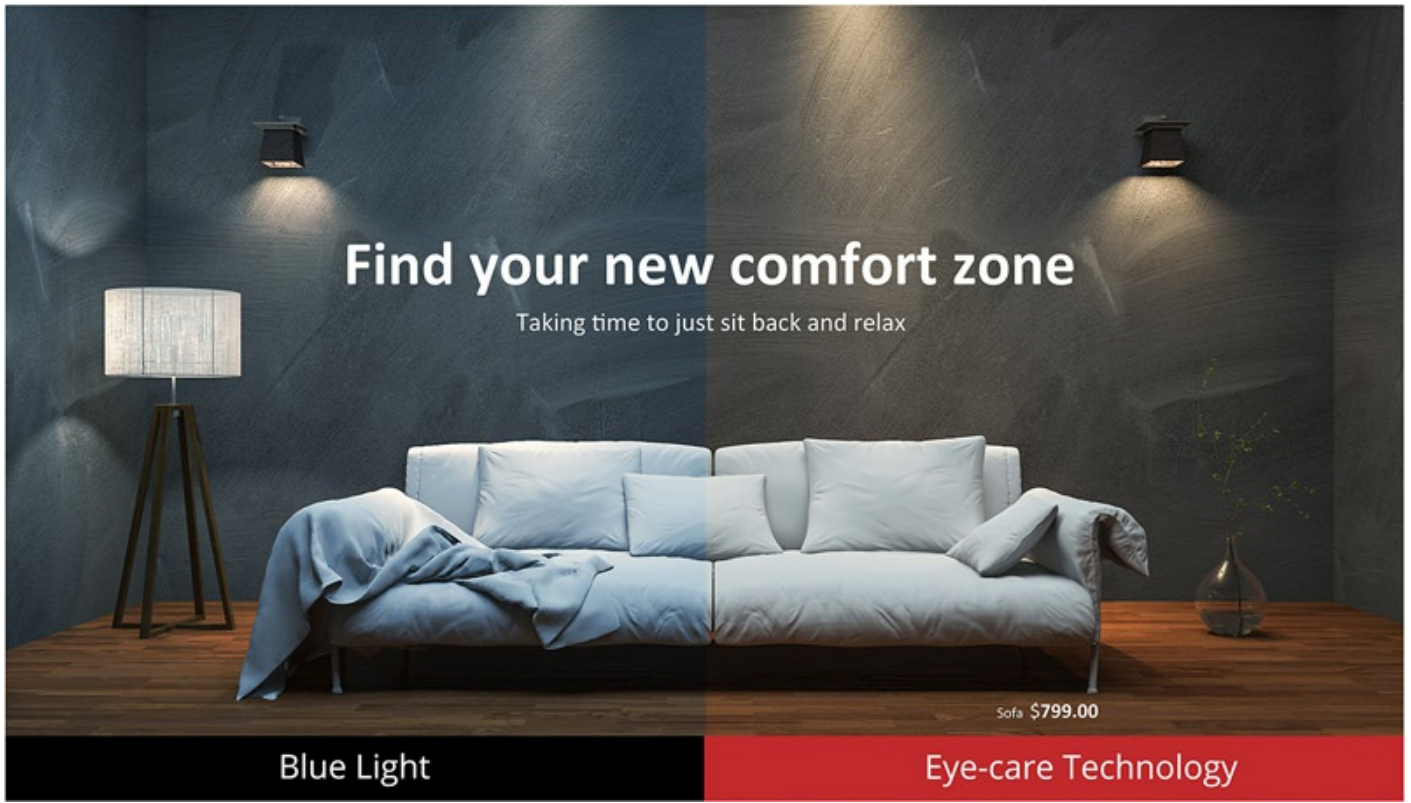
Enhanced Viewing Comfort *Blue Light Filter*

Blue Light Filter helps to eliminate eye strain from extended viewing periods.



Eye-care technologies for comfort viewing

This display adopts exclusive Flicker-Free and Blue Light Filter eye-care technologies. By nearly eliminating screen flickering at all brightness levels via a constant LED light source and reduced blue light exposure, the display ensures longer viewing time and increased eye comfort for presentation and multimedia experiences – without eye fatigue.



I/O Connectors



1. AC In & Power Switch
2. Menu Controls
3. Speakers
4. Audio In
5. HDMI
6. DVI In
7. VGA In
8. YPbPr IN
9. Kensington Lock Slot
10. RS232 In
11. LAN
12. RCA Audio In
13. USB 2.0 (USB playback)
14. RS232 out
15. IR out
16. RCA Audio Out

Technical Specifications

LCD PANEL	Panel Size	32"
	Type/ Tech	TFT LCD Module with LED Backlight
	Display Area (mm)	698.4(H) x 392.85(V)
	Aspect Ratio	16:9
	Resolution	1920 x 1080
	Colors	16.7M colors
	Brightness	350 nits (typ.)
	Contrast Ratio	1200:1 (typ.)
	Response Time	8 ms
	Viewing Angles	H = 178, V = 178 (typ.)
	Backlight	WLED
	Backlight Life	30,000 Hours Min.
	INPUT	HDMI
RGB / VGA		x 1
DVI		x 1
Audio		x1 PC audio (3.5 mm), x 1 (RCA L/R)
CVBS (AV)		x 1 (Share with Y)
YPbPr		x 1
RS232		x 1
IR		x 1 (over audio port)
OUTPUT		Audio
	RS232	x 1
	IR	x 1 (over audio port)
LAN	RJ45	x 1
USB	2.0 Type A	x 1 (USB Playback)
SPEAKERS		10W x 2
COMPATIBILITY	VGA	Up to 1920 x 1080
	DVI	Up to 1920 x 1080
	HDMI	480i, 480p, 720p, 1080i, 1080p
	CVBS	480i
	YPbPr	480i, 480p, 720p, 1080i, 1080p
POWER	Voltage	100-240 VAC +/- 10% Wide Range, 50-60Hz +/-3 Hz
	Consumption	Normal 57 W, Max 81 W
ERGONOMICS	Wall Mount (VESA®)	100x100mm / 200x200mm ; Screw: M4*8 mm
OPERATING CONDITIONS	Temperature (° C)	5°C to 40°C
	Humidity	20% ~ 80% non-condensing
WEIGHT	Net (kg / lb)	6.67 kg / 14.7 lbs (with Stand)
	Net w/o Stand (kg / lb)	5.20 kg / 11.46 lbs
	Gross (kg / lb)	7.8 kg / 17.20 lbs
REGULATIONS	Standard	CE, CB, RoHS, ErP, WEEE
What's in the box?		<ol style="list-style-type: none"> 1. CDE3205-EP commercial display 2. Remote Control with batteries 3. User manual CD wizard 4. Quick Start Guide 5. Power Cables 6. VGA cable

7. RS232 cable
8. RS232 daisy chain cable (2.4mm – 2.4mm)
9. IR sensor cable