

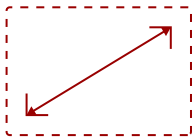


VX2276-SMHD-2 - 22" 1080P THIN-BEZEL IPS MONITOR WITH HDMI, DISPLAYPORT, AND VGA

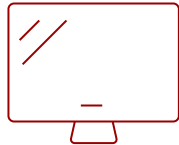
Key Features



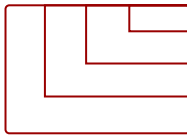
What's in the box.



22"
DISPLAY



IPS
PANEL



Up to 1920x1080 non-interlaced
RESOLUTION



*Power Cable varies by region.

Product Description

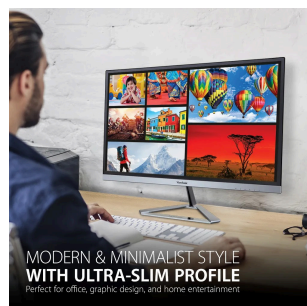
The ViewSonic® VX2276-smhd is a sleek 22" (21.5" viewable) Full HD monitor with a modern and minimalist style perfect for home use. With SuperClear® IPS Panel technology, this monitor offers best-in-class screen performance with ultra-wide viewing angles. A premium ID includes an ultra-slim profile, unique desktop stand, and a sleek edge-to-edge frameless design, that when combined with vivid 1920x1080 resolution and dual speakers, deliver an immersive viewing experience for home entertainment and multimedia applications. HDMI, DisplayPort, and VGA inputs offer flexible connectivity options for both computing and gaming environments, while ViewSonic's exclusive ViewMode™ feature provides intuitive presets for optimized screen performance in different applications. In addition, Flicker-Free technology and a Blue Light Filter help to minimize eye strain from extended viewing periods. With ViewSonic's industry-leading 3-year limited warranty, this monitor is a solid long-term investment that combines style and high performance for the home.

Specifications

	More Information
UPC	766907023671
Screen Size	22"
Viewable Area (in.)	21.5
Panel Type	IPS
Display Resolution	1920 x 1080
Static Contrast Ratio	1,000:1
Dynamic Contrast Ratio	80M:1
Light Source	LED
Brightness	250 cd/m2
Colors	16.7M
Response Time (Typical GTG)	7ms
Viewing Angles	178° horizontal, 178° vertical
Backlight Life (Hours)	30,000
Panel Surface	Anti-glare, hard-coating (3H)
PC Resolution (max)	Up to 1920x1080 non-interlaced
Mac® Resolution (max)	Up to 1920x1080
3.5mm Audio In	1
3.5mm Audio Out	1
HDMI In	1
VGA	1
DisplayPort	1
Internal Speakers	2W (x2)
Eco Mode (Conserve)	15W
Eco Mode (optimized)	18W
Consumption (typical)	21W
Consumption (max)	30W
Voltage	AC 100-240V (universal), 50-60Hz
Cable Organization	No
Kensington Lock Slot	1
Physical Controls	GameMode, 1, 2, 3, 4, Power
On Screen Display	Auto Image Adjust, Contrast/Brightness, Input Select, Audio Adjust, Color Adjust, Information, Manual Image Adjust, Advanced Image Adjust, Setup Menu, Memory Recall (See user guide for complete OSD functionality)
Temperature	32-104° F (0 - 40° C)

Humidity (non-condensing)	20-90%
VESA Compatible	75 x 75 mm
Frequency Horizontal	24~82kHz
Frequency Vertical	50~75Hz
Analog Sync	Separate Sync, TMDS, PCI-E
Tilt (Forward/Back)	5° / 15°
Regulations	cULus, FCC, ICES-003, Energy Star, EPEAT, NRCan, UL-MXCoC, Mexico Energy, CE, WEEE, Energy Efficiency (EEL), EAC, CEC
Net (lbs)	5.4
Gross (lbs)	10.2
Net (kg)	2.4
Gross (kg)	4.6
Packaging (in.)	22.2 x 15.0 x 4.5
Physical (in.)	19.6 x 15.5 x 8.2
Packaging (mm)	563 x 382 x 115
Physical (mm)	497.9 x 392.8 x 209
Package Contents	VX2276-smhd monitor, Power cable, AC/DC adapter, Audio cable, VGA cable, HDMI cable, Quick Start Guide
Recycle/Disposal	Please dispose of in accordance with local, state or federal laws.
Warranty	*Refurbished. 30-day DOA policy for full refund, with a 90-day repair warranty on parts and labor.

UPC: 766907023671



Contact Sales
ViewSonic.com
 888.881.8781
 email:
salesinfo@viewsonic.com