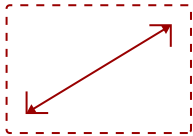


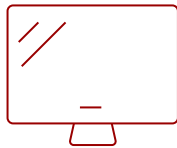
CDE92UW - 92-INCH ULTRA-WIDE DISPLAY, 21:9 ASPECT RATIO, 5120X2160 RESOLUTION, 500 CD/M2 HIGH BRIGHTNESS, 24/7 OPERATION, HDMI, DP, USB-C, RJ45, BUILT-IN CONTENT SHARING, REMOTE MANAGEMENT, AV CONTROL SYSTEM INTEROPERABILITY, LANDSCAPE AND PORTRAIT MODE

## Key Features

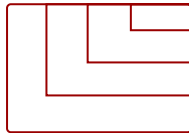
---



92"  
**DISPLAY**



IPS-Type  
**PANEL**



**RESOLUTION**



## Product Description

---

The ViewSonic® CDE92UW is a 92" ultrawide 5K display that is optimized for Microsoft Teams Rooms and ideal for inclusive meetings and presentations. Featuring a 21:9 aspect ratio, this ultrawide display offers 33% more screen real estate than a traditional 16:9 aspect ratio - delivering more than enough space for collaboration and more inclusive meetings. With 24/7 reliability, 500-nit high brightness and a 25% high haze anti-glare screen, this versatile display can also function as an immersive digital signage solution. Versatile connectivity options include HDMI, DisplayPort and USB-C with 100W power delivery. Plus, an all-in-one design features an integrated octa-core SoC on Android 13 to ensure seamless operation without external devices.

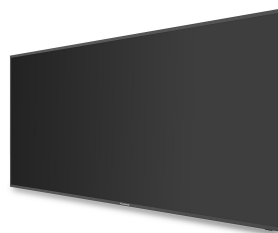
# Specifications

---

	More Information
<b>UPC</b>	766907027969
<b>Screen Size</b>	92"
<b>Viewable Area (in.)</b>	91.52
<b>Display Resolution</b>	5120 x 2160
<b>Light Source</b>	DLED
<b>Orientation</b>	Landscape / Portrait
<b>Static Contrast Ratio</b>	5,000:1
<b>Dynamic Contrast Ratio</b>	5,000:1
<b>Brightness</b>	500 cd/m2
<b>Colors</b>	1.07B
<b>Viewing Angles</b>	178° horizontal, 178° vertical
<b>Backlight Life (Hours)</b>	50,000
<b>Response Time (Typical GTG)</b>	6.5ms
<b>Panel Surface</b>	Anti-Glare type, Hard-coating (3H), Haze 25%
<b>Panel Type</b>	IPS-Type
<b>Aspect Ratio</b>	21:9
<b>Operation Rating</b>	24/7
<b>Internal Speakers</b>	20W x 2 (Speakers) + 20W x1 (Subwoofer)
<b>3.5mm Audio In</b>	1
<b>3.5mm Audio Out</b>	1
<b>SPDIF Audio Out</b>	1
<b>HDMI Out</b>	1
<b>DisplayPort</b>	1
<b>Ethernet LAN (RJ45)</b>	2
<b>HDMI 2.1 In</b>	1
<b>HDMI 2.0 In</b>	3
<b>RS232 In</b>	1
<b>USB 2.0 Type A</b>	1
<b>USB 3.0 Type A</b>	4
<b>USB Type C</b>	1
<b>OPS PC Slot</b>	1
<b>Media Player Type</b>	Media Player
<b>CPU</b>	Rockchip RK3588 (A76 x 4, A55 x 4)

<b>GPU</b>	Quad-core MALI-G610
<b>Operating System</b>	Android™ 13.0
<b>RAM</b>	8GB
<b>Memory Type</b>	LPDDR
<b>Storage Capacity</b>	128GB
<b>Storage Type</b>	eMMC
<b>Voltage</b>	100-240 VAC +/- 10% Wide Range, 50-60Hz +/-3 Hz
<b>Stand-by</b>	<0.5W
<b>Temperature</b>	32-104° F (0 - 40° C)
<b>Humidity (non-condensing)</b>	20-80%
<b>VESA Compatible</b>	800 x 600 mm
<b>Screw Size</b>	M8
<b>Screw Length (mm)</b>	25
<b>Gross (lbs)</b>	138.01
<b>Net (lbs)</b>	95.68
<b>Gross (kg)</b>	62.6
<b>Net (kg)</b>	43.4
<b>Packaging (in.)</b>	92.52 x 44.72 x 8.5
<b>Physical (in.)</b>	85.91 x 37.16 x 3.35
<b>Packaging (mm)</b>	2350 x 1136 x 216
<b>Physical (mm)</b>	2182 x 943.8 x 85.2
<b>Regulations</b>	cTUs, FCC, Energy Star 8.0, RoHS, Mexico NOM, Mexico Energy
<b>Package Contents</b>	CDE92UW Ultra-wide Display, 3m power cable, USB Type C cable 1.8m(USB-IF certified), Remote control, Remote control AAA Battery x 2, Quick Start Guide, RS232 adapter, Clamp x 5, Camera Plate x 2 (1 for VB-CAM-201, 1 for UMB202), Screw x 8 (camera 2+2, wal
<b>Recycle/Disposal</b>	Please dispose of in accordance with local, state or federal laws.
<b>Warranty</b>	Three-year limited warranty on parts, labor and backlight

UPC: 766907027969



**Contact Sales**  
[ViewSonic.com](https://www.viewsonic.com)

888.881.8781  
 email:  
[salesinfo@viewsonic.com](mailto:salesinfo@viewsonic.com)