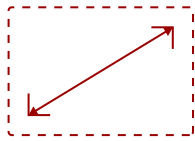


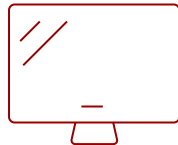
# VIEWSONIC 4,000 LUMENS WXGA HIGH BRIGHTNESS PROJECTOR WITH LAN CONTROL, DUAL HDMI, 0.65" DMD CHIP | PA504W

## Key Features

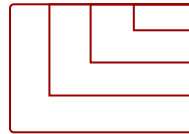
- High Brightness DLP Lamp Projector: WXGA (1280x800p) resolution with a 1.2-1.6 throw ratio and 4,000 ANSI lumens for clear, detailed images in any space
- Designed for Fast Paced Content: A low 16ms input latency and 120Hz refresh rate provides faster frame-by-frame action for smooth images with minimal delay
- Vibrant Colors & High Contrast: 22,000:1 dynamic contrast ratio and 0.65" DLP technology pair with SuperColor for deep blacks, rich color, and stunning image quality
- Large Screen Projection: Projects screen sizes from 80" to 150" with a throw distance of 6.8 ft - 12.8 ft; displays a 100" image from 8.6 ft
- Easy Setup & Image Adjustment: Features 1.3x optical zoom, 0.8x-2.0x digital zoom, and V keystone
- Advanced LAN Control: Remotely schedule and manage the projector via Crestron, AMX, Extron, PJ Link, ATEN, and ViewSonic vController
- Installation Options: This projector is ceiling mountable; compatible with ViewSonic mount PJ-WMK-007



30 - 300 in. / 0.76 - 7.62 m  
**DISPLAY**



**PANEL**



VGA(640 x 480) to FullHD(1920 x 1080)  
**RESOLUTION**



## Product Description

Upgrade your projector setup with the ViewSonic® PA504W high-brightness projector. Featuring a versatile 1.21 - 1.57 throw ratio, this projector can be easily installed onto most existing projector mounts. Plus, with 4,000 ANSI lumens of brightness, audiences can enjoy stunning clarity - even in environments with strong ambient lighting. A Texas instruments .65" DMD chip delivers a high native contrast ratio to make images clearer and more compelling. Each PA504W projector features a sealed optical engine that reduces maintenance as well as state-of-the-art DLP® technology that enables users to enjoy consistent colors and enhanced clarity over an extended period. Connect your projector to Crestron, AMX, PJ Link, ATEN, Extron or other LAN control systems for streamlined device management. Dual HDMI ports enable users to easily switch between content sources. Add an optional ViewSonic WPD-700 Wireless Screen Casting Kit to the projector's USB-A port to make casting content both faster and cable-free.

## Specifications

	More Information
<b>UPC</b>	766907026306
<b>Light Source</b>	DLP Lamp
<b>Display Resolution</b>	WXGA (1280x800)
<b>Display Resolution</b>	1280 x 800

<b>Brightness (Lumens)</b>	4,000 ANSI
<b>Screen Size</b>	30 - 300 in. / 0.76 - 7.62 m
<b>Throw Distance</b>	2.5-33.3ft (100"@8.56ft)
<b>Throw Ratio</b>	1.21-1.57
<b>Keystone</b>	Vertical (+/- 40°)
<b>Lens</b>	1.3x optical zoom
<b>Light Source Life, Normal (hours)</b>	6000
<b>Light Source Life, Dynamic Eco-Mode (hours)</b>	15000
<b>Color Depth</b>	1.07B Color (R/G/B 10bit)
<b>Dynamic Contrast Ratio</b>	22,000:1
<b>Aspect Ratio</b>	16:10
<b>Frequency Horizontal</b>	15K~102KHz
<b>Frequency Vertical</b>	23~120MHz
<b>PC Resolution (max)</b>	VGA(640 x 480) to FullHD(1920 x 1080)
<b>Mac® Resolution (max)</b>	480i, 480p, 576i, 576p, 720p, 1080i, 1080p
<b>USB 2.0 Type A</b>	1
<b>Ethernet LAN (RJ45)</b>	1
<b>3.5mm Audio Out</b>	1
<b>3.5mm Audio In</b>	1
<b>Control (RS232)</b>	1
<b>HDMI 1.4 (with HDCP 1.4)</b>	2
<b>VGA In</b>	1
<b>VGA Out</b>	1
<b>Composite RCA Video In</b>	1
<b>Internal Speakers</b>	10W (x1)
<b>Voltage</b>	100-240V+/- 10%, 50/60Hz AC
<b>Consumption (typical)</b>	255W
<b>Stand-by</b>	<0.5W
<b>Physical Controls</b>	Keypad, Power key
<b>On Screen Display</b>	Display, Image, Power Management, Basic, Advanced, System, Information (See user guide for full OSD functionality)
<b>Temperature</b>	32-104° F (0 - 40° C)
<b>Kensington Lock Slot</b>	1
<b>Net (lbs)</b>	5.14
<b>Gross (lbs)</b>	7.81
<b>Net (kg)</b>	2.33

<b>Gross (kg)</b>	3.54
<b>Packaging (in.)</b>	16.3 x 6.6 x 11.7
<b>Physical (in.)</b>	11.6 x 8.5 x 4.3
<b>Packaging (mm)</b>	415.0 x 168.0 x 297.0
<b>Physical (mm)</b>	294.0 x 218.0 x 110.0
<b>Regulations</b>	cTUVus
<b>Package Contents</b>	PA503HD, power cable, remote control, Quick Start Guide,
<b>Warranty</b>	Three-year limited warranty on parts and labor, 1-year limited warranty on lamp, 1st year free Express Exchange® service. (One year Express Exchange Service requires product registration).
<b>Recycle/Disposal</b>	Please dispose of in accordance with local, state or federal laws.

UPC: 766907026306



### Contact Sales

[ViewSonic.com](http://ViewSonic.com)

888.881.8781

email: [salesinfo@viewsonic.com](mailto:salesinfo@viewsonic.com)