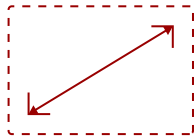


# VIEWSONIC 4,500 ANSI LUMENS WXGA LASER PROJECTOR WITH H/V KEYSTORE, 4 CORNER ADJUSTMENT, 360 DEGREE PROJECTION | LS630W

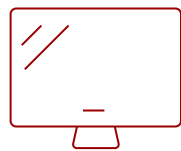
## Key Features

---

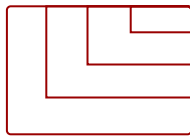
- High Brightness Laser Projector: WXGA (1280x800p) resolution with a 1.1-1.5 throw ratio and 4,500 ANSI lumens for clear, detailed images in compact spaces
- Golf Mode for Realistic Simulation: Designed for immersive play, Golf Mode supports major golf simulators for lifelike play on world-class virtual courses
- Large Screen Projection: Projects screen sizes from 80" to 150" with a throw distance of 6.7 ft - 12.5 ft; displays a 100" image from 8.3 ft
- Easy Setup & Image Adjustment: Features 1.3x optical zoom, 0.8x-2.0x digital zoom, H/V keystone, 360-degree projection, portrait mode, and 4-corner adjustment
- Advanced LAN Control: Remotely schedule and manage the projector via Crestron, AMX, Extron, PJ Link, ATEN, and ViewSonic vController
- Instant Power On/Off: Enables quick startup and shutdown with optional settings for automatic power control
- Installation Options: This projector is ceiling mountable; compatible with ViewSonic mount PJ-WMK-007



30 - 300 in. / 0.76 - 7.62 m  
**DISPLAY**



**PANEL**



1920 x 1200  
**RESOLUTION**



## Product Description

---

Get bright, long-lasting performance without the hassle thanks to the ViewSonic® LS630W laser projector. Perfect for businesses and schools, this lamp-free WXGA projector delivers vibrant, clear images for up to 30,000 hours - that's years of use without a lamp replacement! With 4,500 ANSI lumens of brightness, your presentations and lessons will shine even in well-lit rooms. Flexible installation options, including compatibility with existing mounts and 360° projection, make upgrading a breeze. Plus, centralized LAN control simplifies management for IT teams. The LS630W offers a low total cost of ownership and hassle-free operation for a smart investment.

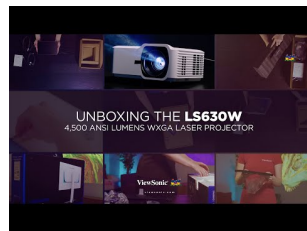
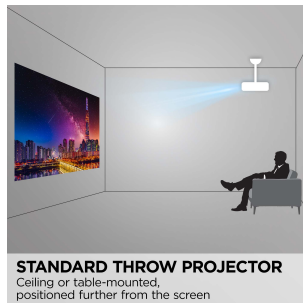
## Specifications

---

<b>UPC</b>	766907031270
<b>Light Source</b>	DLP Laser
<b>Display Resolution</b>	WXGA (1280x800)
<b>Display Resolution</b>	1280 x 800
<b>Brightness (Lumens)</b>	4,500 ANSI
<b>Screen Size</b>	30 - 300 in. / 0.76 - 7.62 m
<b>Throw Distance</b>	0.77-9.98m (100"@2.56m)
<b>Throw Ratio</b>	1.18-1.54
<b>Keystone</b>	Vertical ( $\pm 30^\circ$ ) / Horizontal ( $\pm 30^\circ$ )
<b>Lens</b>	1.3x optical zoom
<b>Light Source (watt)</b>	Laser
<b>Light Source Life, Normal (hours)</b>	20000
<b>Light Source Life, Dynamic Eco-Mode (hours)</b>	30000
<b>Color Depth</b>	1.07 Billion Colors
<b>Dynamic Contrast Ratio</b>	3,000,000:1
<b>Aspect Ratio</b>	16:10
<b>Frequency Horizontal</b>	15K-102KHz
<b>Frequency Vertical</b>	24-120Hz
<b>PC Resolution (max)</b>	1920 x 1200
<b>PC Resolution (min)</b>	640 x 480
<b>Mac® Resolution (max)</b>	1920 x 1200
<b>Mac® Resolution (min)</b>	640 x 480
<b>USB 2.0 Type A</b>	1
<b>Ethernet LAN (RJ45)</b>	1
<b>3.5mm Audio Out</b>	1
<b>Control (RS232)</b>	1
<b>HDMI 1.4 (with HDCP 1.4)</b>	2
<b>Internal Speakers</b>	15W (x1)
<b>Voltage</b>	100-240V+/- 10%, 50/60Hz AC
<b>Consumption (typical)</b>	175W
<b>Stand-by</b>	<0.5W
<b>Physical Controls</b>	Keypad, Power key
<b>On Screen Display</b>	Display, Image, Power Management, Basic, Advanced, System, Information (See user guide for full OSD functionality)
<b>Temperature</b>	32-104° F (0 - 40° C)
<b>Kensington Lock Slot</b>	1

<b>Net (lbs)</b>	6.8
<b>Gross (lbs)</b>	10.1
<b>Net (kg)</b>	3.1
<b>Gross (kg)</b>	4.6
<b>Packaging (in.)</b>	15.7 x 11.0 x 6.1
<b>Physical (in.)</b>	11.3 x 8.5 x 5.0
<b>Packaging (mm)</b>	400.0 x 280.0 x 155.0
<b>Physical (mm)</b>	286.0 x 216.0 x 129.0
<b>Regulations</b>	cTUVus
<b>Package Contents</b>	LS630W, power cable, remote control, Quick Start Guide
<b>Warranty</b>	Three-year limited warranty on parts and labor, 1-year limited warranty on lamp, 1st year free Express Exchange® service. (One year Express Exchange Service requires product registration).
<b>Recycle/Disposal</b>	Please dispose of in accordance with local, state or federal laws.

UPC: 766907031270



**Contact Sales**  
[ViewSonic.com](http://ViewSonic.com)

888.881.8781  
email:  
[salesinfo@viewsonic.com](mailto:salesinfo@viewsonic.com)