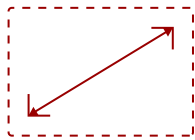


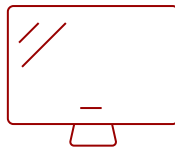
IFP6552-1C-E2 - 65" VIEWBOARD® INTERACTIVE DISPLAY BUNDLE

Key Features

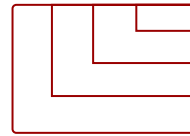
- **ULTRA HD RESOLUTION:** 65 Inch 4K Ultra HD (3840x2160p) interactive display
- **ADVANCED TOUCH:** 33-point multi-touch lets users write on the display with their fingers and stylus pens
- **INTEGRATED SOFTWARE:** The myViewBoard suite includes Whiteboard, ViewBoard Cast, and more for better engagement
- **BETTER SOUND:** Built-in beamforming microphone and 45W stereo soundbar delivers optimal sound
- **FLEXIBLE CONNECTIVITY:** Powerful quad-core processor and versatile connectivity options (HDMI,VGA, RJ45, and USB-C ports)
- **EVERYTHING TO GET STARTED:** This bundle includes the interactive display, wireless AC adapter and rolling mobile cart
- **REMOTE MANAGEMENT:** Schedule updates and monitor device status with the built-in myViewBoard® Manager software
- **PEACE OF MIND:** Industry-leading 3-year standard warranty with optional extensions and robust support services



65
DISPLAY



PANEL



RESOLUTION

Product Description

Ideal for education environments, this all-in-one ViewBoard Bundle includes a 65" ViewBoard IFP6552-1C 4K interactive display, a VB-WIFI-001 WiFi and Bluetooth adapter, and a VB-STND-001 rolling mobile cart.

Specifications


More Information	
OS	Android 9.0
GPU	ARM Mali-G52
CPU	ARM Quad Core Cortex A73 1.8GHz
CPU Processor Speed	1.8GHz

Memory	4GB
Storage	32GB
Microphone	Beamforming array x 8, noise cancelation
Internal Speakers	15W (x2)
Subwoofer	15W (x1)
HDMI 2.0 In	4
HDMI Out	1
VGA	1
DisplayPort	1
3.5mm Audio In	1
3.5mm Audio Out	1
SPDIF Audio Out	1
USB 3.0	3
USB 2.0	2
USB Type C	1
Slot-in PC Slot	1
USB B Touch Port	3
RS232	1
Ethernet LAN (RJ45)	2
WIFI Module Slot	1
Intel® OPS Slot In (80-pin)	1
Voltage	100-240 VAC
Consumption (typical)	170.3W
Stand-by	<0.5
Temperature	32-104° F (0 - 40° C)
Humidity (non-condensing)	10-90%
Touch Technology	Infrared
Touch Points	Windows: 33, Android: 20
Tip Detection	Dual tips, 2.5mm and 9.0mm
Latency	4ms
Net (lbs)	93.4
Gross (lbs)	114.9
Net (kg)	42.4
Gross (kg)	52.1
Packaging (in.)	64.1 x 41.2 x 8.9
Physical (in.)	58.6 x 37.3 x 4.7

Packaging (mm)	1628.0 x 1046.0 x 225.0
Physical (mm)	1488.0 x 948.0 x 120.0
VESA Compatible	600 x 400 mm
Warranty	3-year limited warranty on parts, labor and backlight, onsite warranty
Recycle/Disposal	Please dispose of in accordance with local, state or federal laws.
Package Contents	IFP6552-1C display, stylus pen x 2, power cable, HDMI cable, USB cable, AV cable, remote control with batteries, Camera plate, M8 screw x 8, Quick Start Guide. Bundle package includes WiFi Card and WMK-047
Regulations	cTUVus, FCC, ENERGY STAR, EPEAT Silver, Mexico Energy, CE, CB, RoHS, ErP, WEEE
Ethernet LAN	(10/100/1000M) (USB Type-C 10/100, Android & PC 10/100/1000)
Display Type	LCD
Screen Size	65
Viewable Area (in.)	65
Light Source	LED
Display Resolution	3840 x 2160
Aspect Ratio	16:9
Static Contrast Ratio	1,200:1
Brightness	350 cd/m2
Response Time (Typical GTG)	8ms
Viewing Angles	178° horizontal, 178° vertical
Panel Surface	Anti-glare 7H tempered glass

Contact Sales

ViewSonic.com

888.881.8781 

email: salesinfo@viewsonic.com 