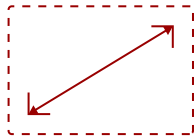


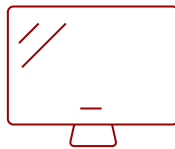
VIEWSONIC IFP6552-C1 - 65" VIEWBOARD® INTERACTIVE FLAT PANEL BUNDLE WITH CHROMEBOX

Key Features

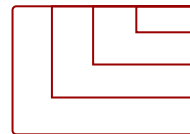
- 65" ViewBoard IFP6552 4K interactive flat panel
- VB-WIFI-001 WiFi and Bluetooth adapter
- NMP760 Chromebox
- WMK-047 wall mount



65"
DISPLAY



PANEL



RESOLUTION

Product Description

Ideal for education environments, this all-in-one ViewBoard Bundle includes a 65" ViewBoard IFP6552 4K interactive flat panel, a VB-WIFI-001 WiFi and Bluetooth adapter, a NMP760 Chromebox, and a WMK-047 wall mount.

Specifications


	More Information
OS	ViewBoard OS based on Android 9.0
GPU	ARM Mali-G52
CPU	ARM Quad Core Cortex A73
CPU Processor Speed	1.8GHz

Memory	4GB
Storage	32GB
Internal Speakers	15W (x2)
Subwoofer	15W (x1)
HDMI 2.0 In	3
HDMI Out	1
VGA	1
DisplayPort	1
3.5mm Audio In	1
3.5mm Audio Out	1
SPDIF	1
USB 3.0	4
USB 2.0	1
USB 2.0 Type B	2
USB 3.1 Type C	1
OPS PC Slot	1
RS232	1
Ethernet LAN (RJ45)	1
WIFI Module Slot	1
Voltage	100-240 VAC
Consumption With Slot-In PC (typical)	380W
Stand-by	<0.5W
On Screen Display	Input, Volume, Backlight, Audio, Screen, Display, Adjust
Temperature	32-104° F (0 - 40° C)
Humidity (non-condensing)	20-80%
Touch Technology	Infrared
Touch Points	Windows: 33, Android: 20
Tip Detection	Dual tips, 2.5mm and 8mm
Net (lbs)	96.78
Gross (lbs)	122.14
Net (kg)	43.90
Gross (kg)	55.40
Packaging (in.)	65.35 x 41.14 x 9.65
Physical (in.)	59.41 x 37.61 x 4.69
Packaging (mm)	1660 x 1045 x 245
Physical (mm)	1509.1 x 955.4 x 119.1

VESA Compatible	600 x 400 mm
Warranty	3-year limited warranty on parts, labor and backlight, onsite warranty
Recycle/Disposal	Please dispose of in accordance with local, state or federal laws.
Package Contents	IFP6552 display, Power cable, Remote control, USB Type-C cable, USB Touch cable, Touch pen x 2, Quick Start Guide, RS232 adapter, Clamp x 5, Camera Plate, Screw x 8, HDMI cable, Eraser, AAA Battery x 2
Regulations	cTUVus, FCC, ENERGY STAR 7.0, Mexico Energy, CE, CB, RoHS, ErP, WEEE
Battery Chemistry	Lithium
Ethernet LAN	(10/100/1000M) (USB Type-C 10/100, Android & PC 10/100/1000)
Wifi	Wi-Fi 6 (802.11ax (a/b/g/n/ac/ax))
Bluetooth	Bluetooth 5.0
Display Type	LCD
Screen Size	65"
Viewable Area (in.)	65
Orientation	Landscape
Light Source	LED
Display Resolution	3840 x 2160
Refresh Rate	60Hz
Aspect Ratio	16:9
Static Contrast Ratio	1,200:1
Backlight Life (Hours)	50,000
Brightness	400 nits (without cover glass)
Response Time (Typical GTG)	8ms
Viewing Angles	178° horizontal, 178° vertical
Panel Surface	Anti-glare 7H tempered glass

Contact Sales

[ViewSonic.com](https://www.viewsonic.com)

888.881.8781 

email: salesinfo@viewsonic.com 