

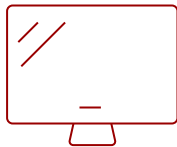
X2 - 1080P SHORT THROW PROJECTOR WITH 3100 LED LUMENS, USB C, BT SPEAKERS AND WI-FI

Key Features

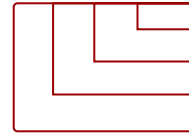
- Full HD (1920x1080) LED projector with bright 3100 LED lumens and short throw lens
- Cinema SuperColor technology with 125% Rec. 709 wide color gamut produces lifelike colors
- Built-in Dual Harman Kardon Bluetooth speakers deliver room-filling audio
- 1.2x optical zoom, vertical/horizontal keystone correction, and 4-corner adjustment for flexible setup
- Livestream sporting events, binge shows on Netflix or Disney+ by adding a dongle (not included)
- Supports most media players, PCs, Macs, and mobile devices with inputs such as Wi-Fi, Bluetooth, HDMI, USB-C



60 - 120 in. / 1.5 - 3.0 m
DISPLAY



PANEL



3840 x 2160
RESOLUTION



Product Description

The ViewSonic® X2 is a lamp-free, high brightness smart short throw projector that delivers incredible Full HD entertainment for any home theater. Featuring a 0.69-0.83 short throw ratio, the X2 delivers a huge 100" projection image from only a few feet away. Powered by 3rd generation LED technology, the X1 features an impressive lifespan of up to 30,000 hours and eliminates the need for frequent replacement of lamps with toxic mercury. With 3,100 LED lumens of brightness and 125% Rec. 709 color accuracy, the X1 delivers bright and stunning cinematic colors for big-screen entertainment. Dual Harman Kardon speakers deliver powerful, room-filling sound ideal for movie nights, while Bluetooth compatibility lets you stream music directly from your smartphone or headphones for personal entertainment. Embedded Wi-Fi connectivity enables screen mirroring directly from smart devices to the big screen, making content streaming easier than ever. And with vertical lens shift, 1.2x optical zoom, H/V keystone and 4-corner adjustment capabilities, installing this projector is not only a breeze, but an upgrade to any home theater.

Specifications

	More Information
UPC	766907016673
Light Source	LED
Display Resolution	Full HD (1920x1080)
Display Resolution	1920 x 1080
Brightness (Lumens)	3100 LED
Screen Size	60 - 120 in. / 1.5 - 3.0 m
Throw Distance	0.92m-2.2m (100"@1.53m)

Throw Ratio	0.69-0.83
Keystone	Vertical (+/- 40°) / Horizontal (+/- 40°)
Lens	1.2x optical zoom
Light Source (watt)	RGBG LED
Light Source Life, Normal (hours)	30000
Color Depth	1.07 Billion Colors
Aspect Ratio	16:9
Input Lag	37ms
Frequency Horizontal	15K~102KHz
Frequency Vertical	23-120Hz
PC Resolution (max)	3840 x 2160
PC Resolution (min)	640 x 480
Mac® Resolution (max)	3840 x 2160
Mac® Resolution (min)	640 x 480
USB 2.0 Type A	1
USB Type C	1
3.5mm Audio Out	1
3.5mm Audio In	1
Control (RS232)	1
RCA Audio In (L/R)	1
Wifi	5Gn
Bluetooth Audio-in	1 (BT4.2)
Bluetooth Audio-out	1 (BT4.2)
Internal Speakers	6W (x2)
Voltage	100-240V +/- 10%, 50/60Hz AC
Consumption (typical)	218W
Physical Controls	Keypad, Power key
On Screen Display	Display, Image, Power Management, Basic, Advanced, System, Information (See user guide for full OSD functionality)
Temperature	32-104° F (0 - 40° C)
Kensington Lock Slot	1
Net (lbs)	7.9
Gross (lbs)	12.1
Net (kg)	3.6
Gross (kg)	5.5
Packaging (in.)	19.3 x 14.8 x 12.3


Physical (in.)	14.0 x 9.9 x 4.7
Packaging (mm)	490.0 x 376.0 x 313.0
Physical (mm)	355.0 x 244.0 x 121.0
Regulations	cTUVus
Package Contents	X2 projector, power cable, remote control, Quick Start Guide
Warranty	Three-year limited warranty on parts and labor, 1-year limited warranty on the light source, 1st year free Express Exchange® service. (One year Express Exchange Service requires product registration).
Recycle/Disposal	Please dispose of in accordance with local, state or federal laws.

UPC: 766907016673



Contact Sales

ViewSonic.com

888.881.8781 

email: salesinfo@viewsonic.com 