

CDE4320-W1 - 43" DISPLAY, 3840 X 2160 RESOLUTION, 350 CD/M2 BRIGHTNESS

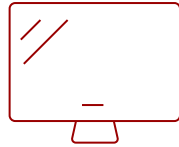
## Key Features

---

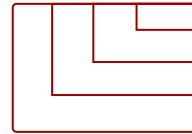
- Ultra HD Resolution
- Embedded SoC Platform
- All-in-One Solution
- RELIABLE 24/7 CONTINUOUS OPERATION
- Remote Content Sharing from Anywhere
- myViewBoard Manager



43  
**DISPLAY**



IPS-Type  
**PANEL**



**RESOLUTION**



## Product Description

---

The ViewSonic® CDE4320 is a 43" (42.51" viewable) premium 4K large format presentation display purpose-built to deliver eye-catching imagery for hotels, restaurants, retail, business, and more. With stunning 3840x2160 resolution, 350-nit high brightness, wide viewing angles, and dual 10W speakers, this display provides immersive, high-impact messaging wherever needed. In addition to HDMI and DVI inputs to connect with various high definition devices, this display utilizes an integrated multi-core processor and 16GB of internal memory, allowing customers to playback multimedia content via USB without the need for a PC. To make life even easier, the bundled vController software offers easy maintenance and intuitive interfaces for remote management via a PC server or laptop, and its flicker-free and blue light filter technologies help provide a comfortable viewing environment. Bundle includes display and USB Wi-Fi adapter.

## Specifications

---

### More Information

<b>OS</b>	Android 8.0
<b>Media Player Type</b>	Media Player
<b>GPU</b>	G51MP2
<b>CPU</b>	Dual CPU - Cortex A73 + A5
<b>CPU Processor Speed</b>	Quad-core, 1.4GHz
<b>Memory</b>	3GB DDR4
<b>Storage</b>	16GB eMMC
<b>Internal Speakers</b>	10W (x2)


<b>HDMI 2.0 (with HDCP 2.2)</b>	2
<b>DVI-D</b>	1
<b>RCA Audio Out</b>	1
<b>3.5mm Audio In</b>	1
<b>SPDIF Audio Out</b>	1
<b>USB 2.0</b>	2
<b>RS232</b>	1
<b>Ethernet LAN (RJ45)</b>	1
<b>Micro SD Card Slot</b>	1
<b>IR in</b>	1
<b>IR out</b>	1
<b>Voltage</b>	100-240 VAC +/- 10% Wide Range, 50-60Hz +/-3 Hz
<b>Consumption (max)</b>	85W
<b>Consumption (typical)</b>	70W
<b>Stand-by</b>	<0.5W
<b>Temperature</b>	32-104° F (0 - 40° C)
<b>Humidity (non-condensing)</b>	20-80%
<b>Net (lbs)</b>	23.2
<b>Gross (lbs)</b>	29.8
<b>Net (kg)</b>	10.5
<b>Gross (kg)</b>	13.5
<b>Packaging (in.)</b>	42.1 x 26.1 x 6.0
<b>Physical (in.)</b>	38.2 x 21.9 x 3.3
<b>Packaging (mm)</b>	1070.0 x 663.0 x 153.0
<b>Physical (mm)</b>	969.9 x 558.3 x 84.6
<b>VESA Compatible</b>	400 x 200 mm
<b>Screw Size</b>	M6
<b>AV Control</b>	AMX Certified, Crestron Certified, Crestron Certified (Version 1.0)
<b>Warranty</b>	Three (3) years from the date of first consumer purchase for parts and labor.
<b>Recycle/Disposal</b>	Please dispose of in accordance with local, state or federal laws.
<b>Package Contents</b>	CDE4320, Remote control with batteries, Quick Start Guide, Power cable, HDMI Cable and RS232 cable
<b>Regulations</b>	cULus, FCC, Energy Star, RoHS
<b>Display Type</b>	LCD
<b>Screen Size</b>	43
<b>Viewable Area (in.)</b>	42.5
<b>Orientation</b>	Landscape

<b>Colors</b>	1.07B
<b>Color Space Support</b>	8 bit+FRC
<b>Light Source</b>	DLED
<b>Display Resolution</b>	3840 x 2160
<b>Panel Type</b>	IPS-Type
<b>Aspect Ratio</b>	16:9
<b>Static Contrast Ratio</b>	1,100:1
<b>Backlight Life (Hours)</b>	40,000
<b>Brightness</b>	350 cd/m2
<b>Response Time (Typical GTG)</b>	6ms
<b>Bezel Width (in.)</b>	0.51
<b>Bezel Width (mm)</b>	13.0
<b>Viewing Angles</b>	178° horizontal, 178° vertical
<b>Panel Surface</b>	Hard Coat - Anti-Glare, 3% Haze, 2H with anti-glare treatment



## Contact Sales

[ViewSonic.com](http://ViewSonic.com)

888.881.8781 

email: [salesinfo@viewsonic.com](mailto:salesinfo@viewsonic.com) 