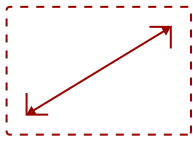


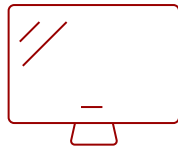
CDE5520 - 55" DISPLAY, 3840 X 2160 RESOLUTION, 350 CD/M2 BRIGHTNESS

Key Features

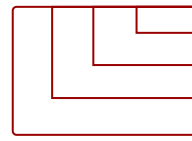
- Ultra HD Resolution
- Powerful All-in-One SoC Platform
- Free ViewBoard® Cast Content Sharing Software
- Integrated Content Management System
- AV Control System Certified
- Embedded LAN and Optional Wireless Connectivity



55
DISPLAY



IPS-Type
PANEL



3840 x 2160
RESOLUTION



Product Description

The ViewSonic® CDE5520 is a 55" premium 4K large format presentation display. With features including a razor-sharp resolution of 3840 x 2160, 450-nit high brightness, 178-degree ultra-wide viewing angles, 2 x 10W speakers, and wireless screen sharing, the display transforms meeting rooms into dynamic communications hubs. The built-in ViewBoard® screen sharing software*, ViewBoard® Cast (along with the optional ViewSonic® vCastSender app), enables both on-site and online users to participate in conferences and simultaneously share content. Equipped with twin dual-core processors, 3GB RAM, and 16GB of internal memory, the CDE5520 can play multimedia from internal storage or a USB flash drive. And with remote configuration and content management system support, the ViewSonic® CDE5520 is also suitable for a wide array of diverse signage applications. *Chrome, Android, Windows, Mac OS, and iOS compliant

Specifications

More Information

UPC	766907007244
Media Player Type	Yes
GPU	Dual-core MaliG51 MP2
CPU	2 x Dual-core Processors - Cortex A73 + A53
CPU Processor Speed	1.4GHz
Memory	3GB DDR4
Storage	16GB eMMC
Internal Speakers	10W (x2)

PC Resolution (max)	3840 x 2160
Mac® Resolution (max)	3840 x 2160
HDMI 2.0 In (With CEC, HDCP 2.2)	2
DVI-D	1
RCA Audio Out	1
SPDIF Audio Out	1
USB 2.0	2
RS232	1
Ethernet LAN (RJ45)	1
IR in	1
IR out	1
Voltage	100-240 VAC +/- 10% Wide Range, 50-60Hz +/-3 Hz
Consumption (max)	115W
Consumption (typical)	100W
Stand-by	<0.5W
On Screen Display	Yes
Remote Control	Yes
Temperature	32-104° F (0 - 40° C)
Humidity (non-condensing)	10-80%
Net (lbs)	37.1
Gross (lbs)	52.8
Net (kg)	16.8
Gross (kg)	23.9
Packaging (in.)	55.9 x 35.8 x 9.7
Physical (in.)	48.9 x 28.1 x 2.9
Packaging (mm)	1420.0 x 910.0 x 245.0
Physical (mm)	1243.2 x 714.0 x 74.8
VESA Compatible	400 x 400 mm
Screw Size	M6
AV Control	AMX Certified, Crestron Certified (Version 1.0), Extron Certified
Warranty	3-year limited warranty on parts, labor and backlight, onsite warranty
Recycle/Disposal	Please dispose of in accordance with local, state or federal laws.
Package Contents	CDE5520, Remote control with batteries, Quick Start Guide, Power cable (1.8m), HDMI Cable (1.8m) and RS232 cable (1.8m)
Regulations	cULus, FCC, Energy Star, RoHS, TUV Mexico, Mexico Energy
Screen Size	55


Viewable Area (in.)	54.6
Light Source	DLED
Display Resolution	3840 x 2160
Panel Type	IPS-Type
Static Contrast Ratio	1,200:1
Backlight Life (Hours)	40,000
Brightness	350 cd/m2
Response Time (Typical GTG)	9ms
Bezel Width (in.)	0.55 (uniform)
Bezel Width (mm)	13.9 (uniform)
Viewing Angles	178° horizontal, 178° vertical
Panel Surface	Hard Coat - Anti-Glare, 3% Haze, 2H with anti-glare treatment

UPC: 766907007244



Contact Sales

ViewSonic.com

888.881.8781 

email: salesinfo@viewsonic.com 