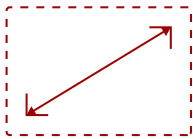


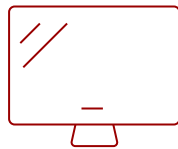
# LS860WU - 5000 LUMENS WUXGA SHORT THROW LASER PROJECTOR WITH 1.3X OPTICAL ZOOM

## Key Features

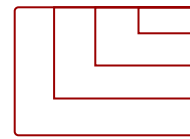
- Bright Images in Large Spaces
- Long-Lasting Laser Phosphor Light Source
- One-Wire HDBT® Input
- 360-Degree Orientation
- Portrait Mode Presentation
- Short Throw
- Software Updates Via Mini USB



60 - 200 in. / 1.5 - 5.1 m  
**DISPLAY**



**PANEL**



1920 x 1200  
**RESOLUTION**



## Product Description

Bright and versatile for any professional installation, the ViewSonic® LS860WU WUXGA laser projector delivers everything you need for big screens in big venues. Delivering 5,000 lumens of advanced high brightness, 300,000:1 contrast ratio, and up to 20,000 hours\* of light source life, this projector is ideal for auditoriums, lecture halls, large boardrooms, houses of worship, and more. Thanks to SuperColor™ technology, content is brought to life with captivating color, crisp graphics, and stunning videos no matter the environment. This top-notch performer is also easy to deploy and manage with its vertical/horizontal keystone, 4-corner adjustment, and a vertical/horizontal lens shift feature that provides extreme flexibility in even the most challenging installations. A short throw lens with a 0.8 throw ratio offers large projection images for smaller rooms. Thanks to the built-in HDBT receiver, the projector is capable of receiving uncompressed HD video and audio from over 200 feet away via network cable. Moreover, 360-degree tilt angle projection, portrait mode, and 24/7 operation allow for extreme mounting flexibility. The ViewSonic® LS860WU is the ideal WUXGA laser projector for professional installations, large venues, and business and education environments. \*Light source life may vary based on actual usage and other factors.

## Specifications

	More Information
<b>UPC</b>	766907003987
<b>Light Source</b>	DLP Laser
<b>Display Resolution</b>	WUXGA (1920x1200)
<b>Display Resolution</b>	1920 x 1200
<b>Brightness (Lumens)</b>	5,000 ANSI

<b>Screen Size</b>	60 - 200 in. / 1.5 - 5.1 m
<b>Throw Distance</b>	3.4 - 12.6 ft / 1.0 - 3.8 m
<b>Throw Ratio</b>	0.81-0.89
<b>Keystone</b>	Vertical (+/- 40°) / Horizontal (+/- 40°)
<b>Lens</b>	1.1x optical zoom
<b>Light Source (watt)</b>	Nichia 67W X 2
<b>Light Source Life, Normal (hours)</b>	20000
<b>Light Source Life, Dynamic Eco-Mode (hours)</b>	20000
<b>Color Depth</b>	1.07 Billion Colors
<b>Dynamic Contrast Ratio</b>	30,000,000:1
<b>Aspect Ratio</b>	16:10
<b>Input Lag</b>	37ms
<b>Lens Shift</b>	Verical: +/- 50%, Horizontal: +/- 23%
<b>Operation Rating</b>	24/7
<b>Frequency Horizontal</b>	15K-102KHz
<b>Frequency Vertical</b>	23-120Hz
<b>PC Resolution (max)</b>	1920 x 1200
<b>PC Resolution (min)</b>	640 x 480
<b>Mac® Resolution (max)</b>	1920 x 1200
<b>Mac® Resolution (min)</b>	640 x 480
<b>USB 2.0 Type A</b>	1
<b>Ethernet LAN (RJ45)</b>	1
<b>3.5mm 12V Trigger</b>	1
<b>3.5mm Audio Out</b>	1
<b>3.5mm Audio In</b>	1
<b>Control (RS232)</b>	1
<b>HDMI 1.4 (with HDCP 1.4)</b>	2
<b>VGA In</b>	1
<b>VGA Out</b>	1
<b>Composite RCA Video In</b>	1
<b>S-Video In</b>	1
<b>RCA Audio In (L/R)</b>	1
<b>3D VESA</b>	1
<b>HDBT</b>	1
<b>Internal Speakers</b>	10W (x2)
<b>Stand-by</b>	<0.5W


<b>On Screen Display</b>	Display, Image, Power Management, Basic, Advanced, System, Information (See user guide for full OSD functionality)
<b>Temperature</b>	32-104° F (0 - 40° C)
<b>Humidity (non-condensing)</b>	0-90%
<b>Kensington Lock Slot</b>	1
<b>Net (lbs)</b>	14.6
<b>Gross (lbs)</b>	20.1
<b>Net (kg)</b>	6.6
<b>Gross (kg)</b>	9.1
<b>Packaging (in.)</b>	20.3 x 19.3 x 10.9
<b>Physical (in.)</b>	15.9 x 12.0 x 5.7
<b>Packaging (mm)</b>	515.0 x 490.0 x 276.0
<b>Physical (mm)</b>	405.0 x 305.0 x 145.0
<b>Regulations</b>	FCC, cTUVus, ROHS
<b>Package Contents</b>	LS860WU projector, power cable, VGA cable, remote control, Quick Start Guide
<b>Warranty</b>	Five-year limited warranty on parts and labor, 1st year free Express Exchange® service. (One year Express Exchange Service requires product registration).
<b>Recycle/Disposal</b>	Please dispose of in accordance with local, state or federal laws.

UPC: 766907003987



### Contact Sales

[ViewSonic.com](http://ViewSonic.com)

888.881.8781 

email: [salesinfo@viewsonic.com](mailto:salesinfo@viewsonic.com) 