

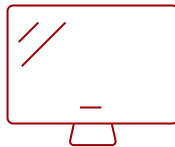
LS750WU - 5000 LUMENS WUXGA NETWORKABLE LASER PROJECTOR WITH 1.3X OPTICAL ZOOM

Key Features

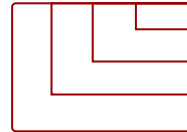
- Bright Images in Large Spaces
 - Long-Lasting Laser Phosphor Light Source
 - Reliable 24/7 Operation
 - 360-Degree Orientation
 - Peace of Mind
 - Software Updates via Mini USB
-



30 - 300 in. / 0.76 - 7.62 m
DISPLAY



PANEL



1920 x 1200
RESOLUTION



Product Description

Bright and versatile for any professional installation, the ViewSonic® LS750WU WUXGA laser projector delivers everything you need for big screens in big venues. Delivering 5,000 lumens of advanced high brightness, 300,000:1 contrast ratio, and up to 20,000 hours* of light source life, this projector is ideal for auditoriums, lecture halls, large boardrooms, houses of worship, and more. Thanks to SuperColor™ technology, content is brought to life with captivating color, crisp graphics, and stunning videos no matter the environment. This top-notch performer is also easy to deploy and manage with its wide 1.3x optical zoom adjustment, vertical/horizontal keystone, and 4-corner adjustment that provides extreme flexibility in even the most challenging installations. Moreover, 360-degree tilt angle projection and 24/7 operation allow for extreme mounting flexibility. The ViewSonic® LS750WU is the ideal WUXGA laser projector for professional installations, large venues, and business and education environments. *Light source life may vary based on actual usage and other factors.

Specifications

More Information

UPC	766907003048
Light Source	DLP Laser
Display Resolution	WUXGA (1920x1200)
Display Resolution	1920 x 1200
Brightness (Lumens)	5,000 ANSI
Screen Size	30 - 300 in. / 0.76 - 7.62 m
Throw Distance	2.4 - 31.2 ft / 0.7 - 9.5 m

Throw Ratio	1.13-1.47
Keystone	Vertical (+/- 40°) / Horizontal (+/- 40°)
Lens	1.3x optical zoom
Light Source (watt)	Nichia 67W X 2
Light Source Life, Normal (hours)	20000
Light Source Life, Dynamic Eco-Mode (hours)	20000
Color Depth	1.07B Color (R/G/B 10bit)
Dynamic Contrast Ratio	3,000,000:1
Aspect Ratio	16:10
Input Lag	37ms
Frequency Horizontal	15K-102KHz
Frequency Vertical	23-120Hz
PC Resolution (max)	1920 x 1200
PC Resolution (min)	640 x 480
Mac® Resolution (max)	1920 x 1200
Mac® Resolution (min)	640 x 480
USB 2.0 Type A	1
Ethernet LAN (RJ45)	1
3.5mm 12V Trigger	1
3.5mm Audio Out	1
3.5mm Audio In	1
Control (RS-232)	1
HDMI 1.4 (with HDCP 1.4)	2
VGA In	1
VGA Out	1
Composite RCA Video In	1
S-Video In	1
RCA Audio In (L/R)	1
3D VESA	1
Internal Speakers	10W (x2)
On Screen Display	Display, Image, Power Management, Basic, Advanced, System, Information (See user guide for full OSD functionality)
Temperature	32-104° F (0 - 40° C)
Humidity (non-condensing)	0-90%
Kensington Lock Slot	1
Net (lbs)	13.0

Gross (lbs)	18.5
Net (kg)	5.9
Gross (kg)	8.4
Packaging (in.)	20.3 x 19.3 x 10.9
Physical (in.)	15.9 x 12.0 x 5.7
Packaging (mm)	515.0 x 490.0 x 276.0
Physical (mm)	405.0 x 305.0 x 145.0
Regulations	FCC, cTUVus, ROHS
Package Contents	LS750WU projector, Power Cable, VGA Cable, Remote Control, Quick Start Guide
Warranty	Five-year limited warranty on parts and labor, 1st year free Express Exchange® service. (One year Express Exchange Service requires product registration).
Recycle/Disposal	Please dispose of in accordance with local, state or federal laws.

UPC: 766907003048



Contact Sales

ViewSonic.com

888.881.8781 ☎

email: salesinfo@viewsonic.com ✉