

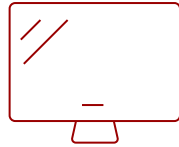
CDX5562-B4

Key Features

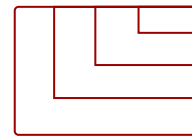
- All-In-One-Solution
- Professional Video Wall Mount
- Optional Video Wall Processor
- Ultra-narrow Bezel
- 10x10 Daisy-Chain Support with DisplayPort or DVI
- 4K UHD Video Support via 2x2 Daisy-Chain



55"
DISPLAY



IPS
PANEL



RESOLUTION



Product Description

Ideal for public, retail, and transportation settings, this all-in-one commercial display bundle includes four (4) ViewSonic® CDX5562 55" (54.6" viewable) commercial displays, four (4) WMK-067 professional wall mounts, and four (4) CB-00010555 DisplayPort cables. With stunning brightness, vibrant images, and multi-screen tiling, the CDX5562 commercial display is your ideal tool for creating video walls that wow! With up to 10x10 daisy-chain installation, and an ultra-narrow bezel that measures only 1.8mm between combined displays, the CDX5562 delivers nearly seamless, high-impact messaging that helps you to astonish, inspire, and inform. Featuring full metal construction and a scratch-resistant tempered glass screen, this durable commercial-grade display delivers reliable messaging 24 hours a day, 7 days a week. With Full HD 1080p resolution, 700-nit brightness, SuperClear® technology for wide viewing angles, and dual 10W stereo speakers, the CDX5562 delivers sharp, vivid images with incredible sound for superior multimedia performance. What's more, 3840x2160 resolution is supported in 2x2 daisy-chain configurations for stunning 4K imaging.

Specifications

More Information

CPU	USB Supported internal media player
Internal Speakers	10W (x2)
HDMI 1.4 In	2
HDMI CEC	2
DVI-D	1
DVI-D Out	1
VGA	1

DisplayPort	1
DisplayPort Out	1
Composite RCA	1
Component RCA	1
Audio Output (Mini Jack)	1
RCA Audio In	1
RCA Audio Out	1
Speaker Out	2
USB 2.0	1
Slot-in PC Slot	1
RS232	1
RS232 Out	1
Ethernet LAN (RJ45)	1
IR in	1
IR out	1
Voltage	100-240 VAC
Consumption (max)	400W
Consumption (typical)	270W
Consumption With Slot-In PC (typical)	334W
Stand-by	<0.5W
Temperature	41-104° F (5 - 40° C)
Humidity (non-condensing)	20-80%
Net (lbs)	403.2
Gross (lbs)	492.4
Net (kg)	182.9
Gross (kg)	223.3
Packaging (in.)	58.1 x 38.7 x 14.8
Physical (in.)	47.7 x 26.9 x 3.8
Packaging (mm)	1475.0 x 983.0 x 37.0
Physical (mm)	1211.4 x 682.2 x 98.5
VESA Compatible	400 x 400 mm
Screw Size	M6
Screw Length (mm)	10
Recycle/Disposal	Please dispose of in accordance with local, state or federal laws.
Package Contents	CDX5562 x 4, WMK-067 x 4, CB-00010555 x 4, Remote control, User Manual, Quick Start Guide, Power cables, VGA cable, RS232 cable, IR sensor cable, RS232 daisy-chain cable, Edge Alignment kit, Thumb screws

Regulations	UL/cUL, FCC, Energy Star 6.0, UL-MX-CoC, Mexico Energy
Classification	Discontinued
Screen Size	55"
Viewable Area (in.)	54.6
Orientation	Landscape / Portrait
Light Source	DLED
Display Resolution	1920 x 1080
Panel Type	IPS
Aspect Ratio	16:9
Static Contrast Ratio	1,200:1
Backlight Life (Hours)	60,000
Brightness	700 cd/m2
Response Time (Typical GTG)	8ms
Bezel Width (in.)	Top 0.035 / Left 0.035 / Bottom 0.035 / Right 0.035
Bezel Width (mm)	Top 0.9 / Left 0.9 / Bottom 0.9 / Right 0.9
Viewing Angles	178° horizontal, 178° vertical
Panel Surface	Anti-glare, Hard coating 3H
Operation Rating	24/7



Contact Sales

ViewSonic.com

888.881.8781

email: salesinfo@viewsonic.com