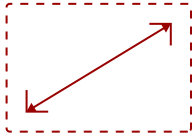
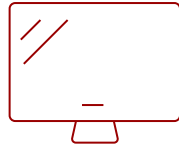


VA2246MH-LED-S

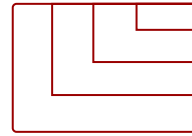
## Key Features



22  
**DISPLAY**



TN  
**PANEL**



1920 x 1080  
**RESOLUTION**



## Product Description

The ViewSonic® VA2246mh-LED is a 22" (21.5" viewable) widescreen monitor with an LED backlight and a glossy, thin-bezel design ideal for use in the home or at the office. With Full HD 1920x1080 resolution and a 50M:1 MEGA Dynamic Contrast Ratio, the VA2246mh-LED delivers stunning brightness and contrast, while a quick 5ms response time ensures crisp pictures and smooth playback. As a complete multimedia package, the display also includes a pair of integrated speakers. VGA and HDMI inputs provide flexible and convenient connectivity, while a VESA-compatible mount offers additional flexibility. With a LED backlight and energy-saving Eco-mode, the VA2246mh-LED is an environmentally friendly display choice. In addition, a 3-year limited warranty, along with one of the industry's best pixel performance policies, make the VA2246mh-LED a great value choice for corporate and educational use as well.

## Specifications

### More Information

<b>UPC</b>	766907928914
<b>Screen Size</b>	22
<b>Viewable Area (in.)</b>	21.5
<b>Panel Type</b>	TN
<b>Display Resolution</b>	1920 x 1080
<b>Static Contrast Ratio</b>	1,000:1
<b>Dynamic Contrast Ratio</b>	50,000,000:1
<b>Light Source</b>	WLED
<b>Brightness</b>	250 cd/m2
<b>Colors</b>	16.7M
<b>Color Space Support</b>	(6-Bit+HI-FRC)
<b>Aspect Ratio</b>	16:9
<b>Response Time (Typical GTG)</b>	5ms

<b>Viewing Angles</b>	170° horizontal, 160° vertical
<b>Backlight Life (Hours)</b>	40,000
<b>Panel Surface</b>	Anti-glare, Hard coating (3H)
<b>PC Resolution (max)</b>	1920 x 1080
<b>Mac® Resolution (max)</b>	1920 x 1080
<b>3.5mm Audio In</b>	1
<b>3.5mm Audio Out</b>	1
<b>VGA</b>	1
<b>HDMI 1.4 In</b>	1
<b>Internal Speakers</b>	2.5W (x2)
<b>Eco Mode (Conserve)</b>	12W
<b>Eco Mode (optimized)</b>	16W
<b>Consumption (typical)</b>	22W
<b>Consumption (max)</b>	26W
<b>Voltage</b>	AC 100-240V (universal), 50-60Hz
<b>Stand-by</b>	0.5W
<b>Cable Organization</b>	No
<b>Kensington Lock Slot</b>	1
<b>Physical Controls</b>	1, 2, 3, 4, Power
<b>On Screen Display</b>	Auto Image Adjust, Contrast/Brightness, Input Select, Audio Adjust, Color Adjust, Information, Manual Image Adjust, Advanced Image Adjust, Setup Menu, Memory Recall (See user guide for complete OSD functionality)
<b>Temperature</b>	32-104° F (0 - 40° C)
<b>Humidity (non-condensing)</b>	20-90%
<b>VESA Compatible</b>	100 x 100 mm
<b>Frequency Horizontal</b>	24 ~ 82KHz
<b>Frequency Vertical</b>	50 ~ 75Hz
<b>Analog Sync</b>	Separate Sync
<b>Digital Sync</b>	TMDS
<b>Tilt (Forward/Back)</b>	5° / 23°
<b>Regulations</b>	cULus, FCC-B, ICES003, Energy Star 7.0, EPEAT Certified, UL-MX-CoC, Mexico Energy, BSMI, PSB, RCM, MEPS
<b>Net (lbs)</b>	7.7
<b>Net Without Stand (lbs)</b>	6.9
<b>Gross (lbs)</b>	10.3
<b>Net (kg)</b>	3.5
<b>Net Without Stand (kg)</b>	3.1
<b>Gross (kg)</b>	4.7


<b>Packaging (in.)</b>	22.2 x 15.4 x 4.5
<b>Physical (in.)</b>	20.1 x 14.4 x 7.8
<b>Physical Without Stand (in.)</b>	20.1 x 12.5 x 1.9
<b>Packaging (mm)</b>	565 x 391 x 114
<b>Physical (mm)</b>	509.6 x 366.1 x 197.6
<b>Physical Without Stand (mm)</b>	509.6 x 316.6 x 48.3
<b>Package Contents</b>	VA2246mh-LED, Display Power Cable (1.5m), VGA Cable (1.5m), Audio Cable (1.5m), Quick Start Guide
<b>Recycle/Disposal</b>	Please dispose of in accordance with local, state or federal laws.
<b>Warranty</b>	*Refurbished. 30-day DOA policy for full refund, with a 90-day repair warranty on parts and labor.
<b>Classification</b>	Refurbished

UPC: 766907928914



### Contact Sales

[ViewSonic.com](http://ViewSonic.com)

888.881.8781 

email: [salesinfo@viewsonic.com](mailto:salesinfo@viewsonic.com) 