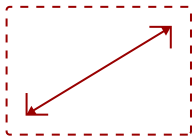


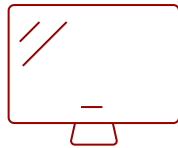
CDE5502-R

Key Features

- Integrated USB multimedia player
- Free-bundled vController™ software
- Hospitality mode for automated multi-screen control
- Control multiple devices with HDMI® CEC and IR pass-through
- Enhanced viewing comfort



55
DISPLAY



PANEL



RESOLUTION



Product Description

*Final Sale. Sold AS-IS with no warranty on parts or labor. 30-day DOA policy for full refund. The ViewSonic® CDE5502 is a 55" (54.6" viewable) Full HD commercial display, offering the combination of cost-efficiency and ease of installation for corporate, retail and hospitality environments. Integrated with an embedded media player, the CDE5502 is able to easily playback high definition messaging via USB port. Versatile connectivity options also include 2 HDMI ports, VGA, RS232 and SPDIF. With Full HD resolution, 350-nit brightness, and wide viewing angles, the slim-bezel CDE5502 delivers sharp and vivid images to ensure crisp pictures and smooth content playback. HDMI CEC pass-through support provides one-touch-play, with additional features for multiple connected devices such as HD set-top-boxes, media players, and Blu-ray™ players. An RS232 port with IR pass-through provides automated control for hospitality installation. Creating a more comfortable viewing experience, the display is equipped with Flicker-Free and Blue Light Filter technologies. In addition, free-bundled vController software offers easy maintenance and intuitive interfaces for remote management via a PC server or laptop.

Specifications

More Information

| | |
|--------------------------|--|
| UPC | 766907807714 |
| Internal Speakers | 10W (x2) |
| HDMI In | 2 |
| VGA | 1 |
| 3.5mm Audio In | 1 |
| 3.5mm Audio Out | 1 |
| SPDIF Audio Out | 1 |
| Voltage | 100~240VAC (Auto Switching), 50-60Hz (universal) |

| | |
|-------------------------------------|--|
| Consumption (max) | 160W |
| Consumption (typical) | 140W |
| Physical Controls | Power, Mute, Input, Vol +, Vol -, Up, Down, Menu |
| On Screen Display | Picture, Sound, Advanced Options |
| Temperature | 32-104° F (0 - 40° C) |
| Humidity (non-condensing) | 20-80% |
| Net (lbs) | 39.4 |
| Net Without Stand (lbs) | 35.3 |
| Gross (lbs) | 50.7 |
| Net (kg) | 17.9 |
| Net Without Stand (kg) | 16.0 |
| Gross (kg) | 23.0 |
| Packaging (in.) | 53.7 x 29.6 x 7.3 |
| Physical Without Stand (in.) | 48.8 x 28.0 x 2.4 |
| Packaging (mm) | 1365 x 864 x 185 |
| Physical Without Stand (mm) | 1238.6 x 711.1 x 60 |
| VESA Compatible | 200 x 400 / 400 x 400 mm |
| Recycle/Disposal | Please dispose of in accordance with local, state or federal laws. |
| Package Contents | CDE5502 display, power cable, VGA cable, RS232 cable, remote control with batteries, ViewSonic Wizard CD (User Guide), Quick Start Guide |
| Regulations | CE, CB, ErP, WEEE, C-tick, cTUVus, FCC, ENERGY STAR, Mexico Energy |
| Classification | Discontinued |
| Screen Size | 55 |
| Viewable Area (in.) | 54.6 |
| Orientation | Landscape |
| Light Source | LED |
| Display Resolution | 1920 x 1080 |
| Aspect Ratio | 16:9 |
| Static Contrast Ratio | 1,200:1 |
| Backlight Life (Hours) | 30,000 |
| Brightness | 350 cd/m2 |
| Response Time (Typical GTG) | 9ms |
| Bezel Width (in.) | Top 0.50 in / Left 0.50 in / Bottom 0.57 in / Right 0.50 in |
| Bezel Width (mm) | Top 12.6 mm / Left 12.6 mm / Bottom 14.5 mm / Right 12.6 mm |
| Viewing Angles | 178° horizontal, 178° vertical |
| Panel Surface | Anti-glare, Hard coating 3H |

UPC: 766907807714



Contact Sales

ViewSonic.com

888.881.8781

email: salesinfo@viewsonic.com