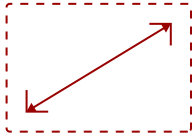
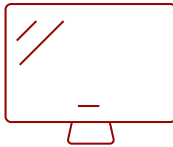


PJD5155-S

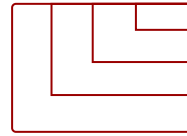
Key Features



30 - 300 in. / 0.76 - 7.62 m
DISPLAY



PANEL



1600 x 1200
RESOLUTION



Product Description

The ViewSonic® LightStream™ PJD5155 price-performance projector features 3,300 lumens, native SVGA 800 x 600 resolution, and intuitive, user-friendly design. Exclusive SuperColor™ technology offers a wide color gamut for beautiful image production in nearly any environment, while sound enhancement technology delivers improved sound quality. The PJD5155 also features extensive connectivity including HDMI, 2 x VGA, Composite Video, S-Video, 1 x VGA output and Audio in/out. An energy-saving DynamicEco® feature reduces power consumption by up to 70%, and extends the lamp life by up to 10,000 hours. With advanced audiovisual features, flexible connectivity options, and an affordable price, the PJD5155 is ideal for use in education and small business environments.

Specifications

	More Information
UPC	766907868418
Light Source	DLP Lamp
Display Resolution	SVGA (800x600)
Display Resolution	800 x 600
Brightness (Lumens)	3,300 ANSI
Screen Size	30 - 300 in. / 0.76 - 7.62 m
Throw Distance	3.3 - 32.8 ft. / 1.0 - 8.0 m
Throw Ratio	1.86~2.04
Keystone	Vertical digital keystone correction: (± 40°)
Lens	1.1x Manual optical zoom / manual optical focus
Light Source (watt)	190
Light Source Life, Normal (hours)	5000
Light Source Life, Dynamic Eco-Mode (hours)	10000

Color Depth	30 bits, 1.07B Color (10+10+10)
Dynamic Contrast Ratio	20,000:1
Aspect Ratio	4:3 (native), 16:9
Input Lag	37ms
Frequency Horizontal	15-102KHz
Frequency Vertical	23-120Hz
PC Resolution (max)	1600 x 1200
Mac® Resolution (max)	1600 x 1200
3.5mm Audio Out	1
3.5mm Audio In	1
Control (RS-232)	1
HDMI 1.4 In	1
VGA In	2
VGA Out	1
Composite RCA Video In	1
S-Video In	1
Mini USB	1
Internal Speakers	2W (x1)
Voltage	100~240VAC (Auto Switching), 50-60Hz (universal)
Consumption (max)	265W
Stand-by	<0.5W
Physical Controls	Power, keystone/arrow keys, left/blank, menu/exit, right/panel key lock, mode/enter, auto, source
On Screen Display	Display, Picture, Source, System Setup (Basic), SystemSetup (Advanced), Information(See user guide for full OSD functionality)
Temperature	32-104° F (0 - 40° C)
Humidity (non-condensing)	10-90%
Normal	32dB
Eco-Mode	27dB
Kensington Lock Slot	1
Net Without Stand (lbs)	4.6
Gross (lbs)	7.5
Net Without Stand (kg)	2.1
Gross (kg)	3.4
Packaging (in.)	16.0 x 8.85 x 13.58
Physical Without Stand (in.)	12.44 x 8.98 x 4.08
Packaging (mm)	410 x 225 x 345

Physical Without Stand (mm)

316 x 228 x 103.7

Regulations

CB, TUV-GS, UL/cUL, FCC (including ICES-003), CE,C-Tick, Mexico Energy, EAC, UkrSEPRO/EMC DOC,UL COC, TUV-S, PSB, KCC, KC, SASO, CCC, WEEE,RoHS, REACH, SVHC, ErP

Package Contents

PJD5155 projector, power cable, VGA cable, remote control with batteries, Quick Start Guide, ViewSonicWizard CD (with User Guide)

Warranty

*Refurbished. 30-day DOA policy for full refund, with a 90-day repair warranty on parts and labor.

Recycle/Disposal

Please dispose of in accordance with local, state or federal laws.

Classification

Discontinued

UPC: 766907868418



Contact Sales

ViewSonic.com

888.881.8781

email: salesinfo@viewsonic.com