

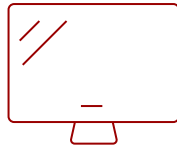
XG2401

Key Features

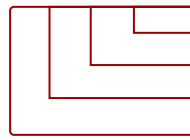
- 144Hz refresh rate
- Ultra-fast response time
- AMD FreeSync™ technology
- Low input lag for seamless gaming experience
- Black stabilization for ultimate visibility



24
DISPLAY



TN
PANEL



Up to 1920x1080 non-interlaced
RESOLUTION



Product Description

The ViewSonic® XG2401 is a 24" Full HD monitor packed with all the speed and features that diehard gaming enthusiasts need. Featuring an incredible 144Hz refresh rate, as well as VESA Adaptive-Sync Technology, this monitor's variable refresh rate capabilities virtually eliminate screen tearing and stuttering for fluid gameplay during fast-paced action scenes. A blazing-fast 1ms response time and low input lag provides smooth screen performance even in the most graphic-intense sequences. For optimum speed and performance, SmartSync technology automatically selects the best refresh rate and response time, and lowest input lag needed in FPS games. For a game-winning competitive edge, a Game Mode feature optimizes visuals for FPS, RTS and MOBA. On top of that, a black stabilization function helps you target enemies lurking in the dark, while the monitor maintains brilliantly rich colors and contrast. With a gamer-inspired ergonomic stand that features an integrated headphone hook and cable management functionality, the XG2401 has all you need to conquer your gaming and entertainment quests.

Specifications

More Information

UPC	766907818116
Screen Size	24
Viewable Area (in.)	24
Panel Type	TN
Display Resolution	1920 x 1080
Static Contrast Ratio	1,000:1
Dynamic Contrast Ratio	120M:1
Light Source	LED

Brightness	350 cd/m2
Colors	16.7M
Response Time (Typical GTG)	1ms
Viewing Angles	170° horizontal, 160° vertical
Backlight Life (Hours)	30,000
Panel Surface	3H Anti-glare, hard-coating
Refresh Rate	144Hz
PC Resolution (max)	Up to 1920x1080 non-interlaced
Mac® Resolution (max)	Up to 1920x1080
USB 2.0 Type B	1
USB 3.0 Type A	2
3.5mm Audio Out	1
HDMI In	2
DisplayPort	1
Power in	3-pin plug (CEE22)
Internal Speakers	2-watt (x2)
Eco Mode (Conserve)	20W
Eco Mode (optimized)	25W
Consumption (typical)	32W
Consumption (max)	36W
Cable Organization	No
Kensington Lock Slot	1
Physical Controls	2, Down, Up, 1, Power
On Screen Display	Contrast/Brightness, Input select, Audio adjust, Color adjust, Information, Manual image adjust, Advanced image adjust, Setup menu, Memory recall (See user guide for complete OSD functionality)
Frequency Horizontal	15~180KHz
Frequency Vertical	24~144Hz
Analog Sync	TMDS, PCI-E
Height Adjust	120 mm / 4.7 in
Swivel	175°
Pivot (Right/Left)	90° / 0°
Tilt (Forward/Back)	5° / 22°
Regulations	cULus, FCC-B, ICES003, Mexico-CoC, Mexico Energy, ST mark, CE EMC, CB, RoHS Green BOM, ErP, REACH SVHC List & DoC, WEEE,EAC, UkrSEPRO + DoC,
Net (lbs)	14.5
Net Without Stand (lbs)	7.6
Gross (lbs)	18.5

Net (kg)	6.6
Net Without Stand (kg)	3.5
Gross (kg)	8.4
Packaging (in.)	27.8 x 16.6 x 8.0
Physical (in.)	22.3 x 17.0 x 9.1
Physical Without Stand (in.)	22.3 x 13.5 x 2.0
Packaging (mm)	705.0 x 422.0 x 20.0
Physical (mm)	566 x 432 x 231
Physical Without Stand (mm)	566 x 342.6 x 50.9
Package Contents	XG2401 monitor, Power cable, DisplayPort cable, USB 3.0 cable, Quick Start Guide, ViewSonic Wizard CD
Classification	Discontinued

UPC: 766907818116



Contact Sales

ViewSonic.com

888.881.8781

email: salesinfo@viewsonic.com