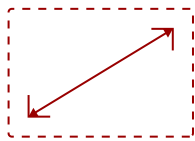


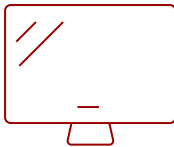
136" ALL-IN-ONE MOBILE DIRECT VIEW LED DISPLAY | LDS136-152

Key Features

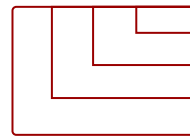
- **EASY SETUP FOR BIG IMPACT:** Unfold and plug in for instant stunning visuals.
- **MOBILE VIDEO WALL GOES ANYWHERE:** Moves easily on wheels and fits into standard elevators.
- **BUILT TO LAST FOR HIGH-TRAFFIC AREAS:** GOB technology provides IP54 and IK06 ratings for maximum protection.
- **INDUSTRY-LEADING, MOTORIZED HEIGHT-ADJUSTABLE STAND:** Enjoy the highest vertical reach for clear sightlines everywhere.
- **SMART, INTEGRATED CONTROL BAR:** Built-in controls and accessible rear ports keep the design clean.



136"
DISPLAY



Direct View LED SMD + Glue-on-Board
PANEL



3840 x 2160 @ 60Hz
RESOLUTION



Product Description

Unfold New Possibilities. Anywhere.

ViewSonic® Mobile All-in-One dvLED Displays

Ready for a big screen without the big hassle? The ViewSonic® LDS136-152 is a foldable 136" Direct View LED video wall on wheels built for maximum flexibility. It sets up in minutes and ships in a rugged flight case for easy transport and storage. This 4th generation model introduces thoughtful upgrades that make setup and operation even easier. Its motorized screen lifts higher than any other dvLED in its class, helping everyone in the audience get a clear view. Need to adjust it? Just raise or lower the screen from anywhere in the room thanks to an included remote control. Rear I/O ports are easy to reach, so connecting devices is quick and simple. An integrated OPS slot also makes it easy to expand your system when needed. A redesigned hinge adds durability for repeated setup and transport. That means you can confidently use the LDS136-152 for events, trade shows and pop-up spaces. Just roll it in, plug it in and wow the audience.

Specifications

	More Information
UPC	766907042450
OS	Android 13
CPU	RK3588
Memory	DDR5 8GB
Storage	Total 64GB (60GB available storage)
Internal Speakers	30W x 2
PC Resolution (max)	3840 x 2160 @ 60Hz
Mac® Resolution (max)	3840 x 2160 @ 60Hz
HDMI 2.0 (with HDCP 2.2)	4
HDMI 2.0 Out (with HDCP 2.2)	1
3.5mm Audio Out	1
SPDIF Audio Out	1
USB 3.0	3
USB 2.0	1
USB Type C	1 (data only)
RS232	1
Ethernet LAN (RJ45)	3
IR in	1
Voltage	100-120V/20A ~ 50/60Hz
Consumption (typical)	100-240V ~ 50/60Hz
Stand-by	<0.5W
Packaging (in.)	81.5 x 78.58 x 33.35in
Physical (in.)	71.7 x 76.7 x 30.71in(min.) / 118.6 x 112.13 x 30.71in(max.)
Packaging (mm)	2070 x 1996 x 847mm
Physical (mm)	1821 x 1948 x 780mm(min.) / 3012 x 2848 x 780mm(max.)
Warranty	3-year limited warranty on parts and labor, on-site service
Package Contents	Power Cord, Remote Control, QSG, Spare LED Module x5, LD-MK-006 x 1, LAN Cable (Cat 5E) x 1, IR Extender Cable x 1
Regulations	cTUVus, FCC, RoHS
Display Type	Direct View LED
Screen Size	136"
Viewable Area (in.)	136
Orientation	Landscape

Light Source	Fine Pixel Pitch LED
LED Pitch Size (mm)	1.56
LED Grayscale	13 bits
Display Resolution	1920 x 1080
Refresh Rate	3,840Hz
Panel Type	Direct View LED SMD + Glue-on-Board
Aspect Ratio	16:9
Static Contrast Ratio	6,500:1
Backlight Life (Hours)	100,000
Brightness	600 nits (100 levels adjustable)
Viewing Angles	170° horizontal, 170° vertical
Impact Protection Rating	IK06 (Front)

UPC: 766907042450



Contact Sales
ViewSonic.com
 888.881.8781
 email: salesinfo@viewsonic.com