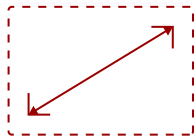


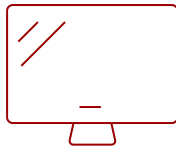
PRE-CONFIGURED 1080P ALL-IN-ONE DVLED DISPLAYS | LDE108-123

Key Features

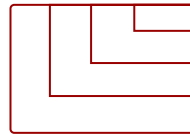
- **INNOVATIVE ALL-IN-ONE DESIGN:** Simplified setup includes everything needed already built into cabinets.
- **OUTSTANDING PRICE-PERFORMANCE:** High-impact dvLED technology that maximizes your investment.
- **GLUE-ON-BOARD TECHNOLOGY:** Protects LEDs from damage and moisture in high-traffic environments.
- **SIMPLIFIED OS:** Streamlines setup, operation, and security.
- **HOT-SWAPPABLE MODULES:** Easy front-serviceable maintenance and includes spare tiles.



108"
DISPLAY



Direct View LED SMD + Glue-on-Board
PANEL



3840x2160
RESOLUTION



Product Description

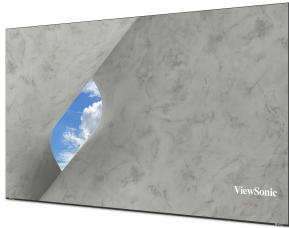
The ViewSonic® LDE108-123 is a 108" all-in-one Direct View LED (dvLED) display. It's part of our LDE Series, designed to deliver outstanding price-performance and simplified dvLED technology. The 108" screen size is the ideal solution for medium-sized rooms where a larger LCD display simply won't fit through the door. The LDE108-123 features an innovative, fully integrated All-in-One design with a simplified OS. Everything you need is built directly into the cabinets, which allows for easier installation and operation. The complete solution ships together and can be ordered with a single SKU, making setup a breeze. This display is also built to last. It uses durable Glue-on-Board technology with an IP54 dust and moisture rating and an IK06 impact rating. You can confidently use it in busy lobbies, classrooms, or conference rooms. With 600-nit brightness and a 6,500:1 contrast ratio, it delivers a vivid, exceptional viewing experience, representing a premier value in large-format displays.

Specifications

	More Information
UPC	766907042696
CPU	RK3588
PC Resolution (max)	3840x2160
Mac® Resolution (max)	3840x2160
HDMI 2.0 (with HDCP 2.2)	1
HDMI 1.4 (with HDCP 1.4)	1
HDMI 1.4 Out (with HDCP 1.4)	1
3.5mm Audio Out	1
USB Type A	1
USB 3.0	2
RS232	1
Ethernet LAN (RJ45)	1
Voltage	100-120V/20A ~ 50/60Hz
Stand-by	<0.5W
On Screen Display	Yes
Remote Control	Yes
Temperature	32-104° F (0 - 40° C)
Humidity (non-condensing)	20-80%
Physical (in.)	94.96 x 53.62 x 1.22
Physical with Wall Mount (in.)	94.96 x 53.62 x 2.2
Physical (mm)	2412 x 1362 x 31
Physical with Wall Mount (mm)	2412 x 1362 x 56
Warranty	3-year limited warranty
Recycle/Disposal	Please dispose of in accordance with local, state or federal laws.
Package Contents	Power Cord, LAN Cable, Remote Control, Installation Guide, Wall Mount, LD-MK-004, LD-MK-006 "
Regulations	cTUVus, FCC, RoHS
Display Type	Direct View LED
Screen Size	108"
LED Pitch Size (mm)	1.2
LED Grayscale	13 bits
Display Resolution	1920 x 1080
Refresh Rate	3,840Hz
Panel Type	Direct View LED SMD + Glue-on-Board

Aspect Ratio	16:9
Static Contrast Ratio	6,500:1
Backlight Life (Hours)	100,000
Brightness	600 nits (100 levels adjustable)
Viewing Angles	170° horizontal, 170° vertical
Impact Protection Rating	IK06 (Front)

UPC: 766907042696



Contact Sales
ViewSonic.com
 888.881.8781
 email:
salesinfo@viewsonic.com