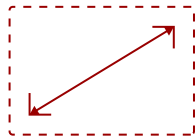


## 31" CONFIGURABLE ALL-IN-ONE LED DISPLAY | LDC031-120 - P1.2

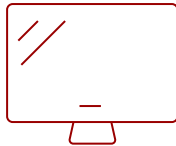
### Key Features

---

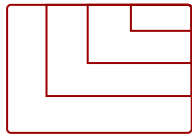
- All-in-one design with configurable screen size and aspect ratio.
- LED cabinets featuring a 4:3 aspect ratio for easy portrait configurations and flexible layouts.
- Enhanced durability with Glue-on-board (GOB) surface treatment.
- Centralized and efficient management via LAN control.
- Detachable system control box for easy access and minimalist aesthetics.
- Ultra-slim design that seamlessly blends into any space.
- Hassle-free installation and maintenance.



31"  
**DISPLAY**



**PANEL**



VGA(640 x 480) to 4K(3840 x 2160@60hz)  
**RESOLUTION**



### Product Description

---

The ViewSonic® LDC series redefines what's possible in Direct View LED displays. By combining multiple LDC031 LED cabinets, you can create diverse video walls for engaging digital signage. Each cabinet features a native 4:3 aspect ratio for easy portrait configurations and flexible layouts. With Glue-on-Board (GOB) surface treatment, the IP54-rated modules are protected against collisions, dust, and moisture, making them suitable for public spaces like lobbies and shopping malls. At just 31mm thick, the display achieves a 99% screen-to-body ratio, offering an impressive viewing experience. Enhanced operational efficiency is facilitated through centralized management via LAN connectivity.

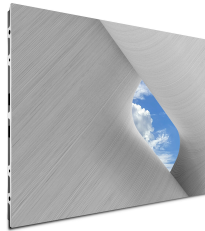
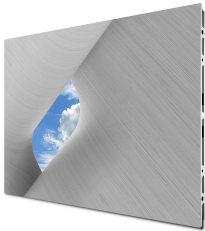
### Specifications

---

<b>UPC</b>	766907026382
<b>OS</b>	Android 9.0
<b>CPU</b>	RK3399
<b>Memory</b>	DDR4 4GB
<b>Storage</b>	Total 32GB (26GB available storage) (26GB available storage)
<b>Internal Speakers</b>	30W x 2
<b>PC Resolution (max)</b>	VGA(640 x 480) to 4K(3840 x 2160@60hz)
<b>Mac® Resolution (max)</b>	480p, 576p, 720p, 1080p, 2160p
<b>HDMI 2.0 (with HDCP 2.2)</b>	4
<b>HDMI 1.4 Out (with HDCP 1.4)</b>	1
<b>Audio-out (HDMI ARC)</b>	2
<b>USB Type A</b>	2
<b>USB 3.0</b>	1
<b>USB 2.0</b>	2
<b>USB Type C</b>	1
<b>RS232</b>	1
<b>Ethernet LAN (RJ45)</b>	3
<b>RJ45 Input (Internet)</b>	1
<b>RJ-45 LAN Port Output</b>	2
<b>IR in</b>	1
<b>Voltage</b>	100-120V/30A~ 50/60Hz or 220-240V/15A~ 50Hz(vary by country)
<b>Consumption (max)</b>	145W
<b>Consumption (typical)</b>	48W
<b>Stand-by</b>	<0.5W
<b>On Screen Display</b>	Yes
<b>Remote Control</b>	Yes
<b>Temperature</b>	32-104° F (0 - 40° C)
<b>Humidity (non-condensing)</b>	20-80%
<b>Net (lbs)</b>	11
<b>Net (kg)</b>	5
<b>Physical (in.)</b>	23.62x13.29x1.2inches per cabinet
<b>Physical (mm)</b>	600 x 337.5 x 31mm per cabinet
<b>Warranty</b>	3-year limited warranty on parts and labor, on-site service
<b>Recycle/Disposal</b>	Please dispose of in accordance with local, state or federal laws.
<b>Regulations</b>	cTUVus, FCC, RoHS
<b>Wifi</b>	2.4G/5G Hz

<b>Display Type</b>	Direct View LED
<b>Screen Size</b>	31"
<b>Viewable Area (in.)</b>	25.2 (H) x 18.9(V)
<b>LED Pitch Size (mm)</b>	1.25
<b>LED Grayscale</b>	13 bits
<b>Display Resolution</b>	512x384
<b>Refresh Rate</b>	3,840Hz
<b>Aspect Ratio</b>	16:9
<b>Static Contrast Ratio</b>	6,500:1
<b>Backlight Life (Hours)</b>	100,000
<b>Brightness</b>	600 nits (100 levels adjustable)
<b>Viewing Angles</b>	170° horizontal, 170° vertical

UPC: 766907026382



**Contact Sales**

[ViewSonic.com](http://ViewSonic.com)

888.881.8781

email:

[salesinfo@viewsonic.com](mailto:salesinfo@viewsonic.com)