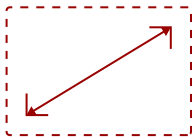


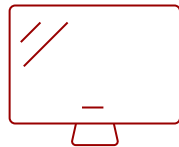
VIEWSONIC 32" 1080P 10-POINT TOUCH MONITOR WITH 24/7 OPERATION, HDMI, DISPLAYPORT, RS232 | TD3207

Key Features

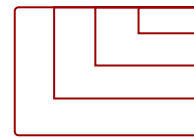
- Versatile Touch Monitor: 32 Inch Full HD (1920x1080p) IPS touch monitor with thin bezels and 60Hz refresh rate
- Advanced Touch Screen: Robust 10-point Projected Capacitive (PCAP) technology provides a smooth and responsive experience with every tap, pinch, and swipe
- Extended 24/7 Functionality: Rated for 24/7 continuous operation
- Advanced Durability: An IP54 rated screen with 3mm-thick glass and 7H hardness offers a scratch and water-resistant surface that can stand up to hard knocks and water splashes
- Multi-Touch For Mac: MacOS users can access touch and gesture controls on touch displays connected to their Apple devices using ViewSonic's vTouch driver Not available for iPhone and iPad
- Open Frame Design: An open frame design with 200x100mm and 400x200mm mounting options enable seamless and secure mounting in portrait or landscape orientations
- Flexible Connectivity: The TD3207 supports laptops, PCs, Macs and POS Systems with USB-B, HDMI, DisplayPort and RS232 inputs



32
DISPLAY



MVA
PANEL



1920 x 1080
RESOLUTION

Product Description

The TD3207 is the ideal solution for commercial and industrial spaces. Designed for heavy, continuous usage, TD3207 delivers a 24/7 long-life. With an open frame design, and equipped with VESA mounting design suitable for portrait and landscape mode, this monitor is ready to be incorporated into industrial, retail, and commercial applications. Resistant to moisture and scratches, the 3mm thick glass screen with 7H hardness features an intuitive 10-point PCAP touch technology for maximum interactivity. Featuring SuperClear® VA panel technology, the device delivers lifelike imagery, vivid color, and constant brightness of up to 450 nits. Connection options include HDMI and DisplayPort inputs for effortless sharing capabilities and an RS232 allows you to control the device remotely.

Specifications

More Information	
UPC	766907010466
Screen Size	32
Viewable Area (in.)	31.5
Panel Type	MVA

Display Resolution	1920 x 1080
Display Resolution	Full HD (1920x1080)
Static Contrast Ratio	3,000:1
Dynamic Contrast Ratio	50,000,000:1
Light Source	LED
Brightness	450 cd/m2
Colors	16.7M
Color Space Support	8 bit true
Aspect Ratio	16:9
Response Time (Typical GTG)	5ms
Viewing Angles	178° horizontal, 178° vertical
Backlight Life (Hours)	50,000
Panel Surface	7H Tempered Glass, Haze 2%
Refresh Rate	60Hz
PC Resolution (max)	1920 x 1080
Mac® Resolution (max)	1920 x 1080
USB Type B	1
3.5mm Audio Out	1
HDMI 1.4 In	1
DisplayPort	1
RS232 In	1
Touch Technology	Projective Capacitive
Touch Points	10-Point Touch
Internal Speakers	2-watt (x2)
Eco Mode (Conserve)	30w
Eco Mode (optimized)	38w
Consumption (typical)	46w
Consumption (max)	50w
Voltage	AC 100-240V (universal), 50-60Hz
Stand-by	0.5w
Power Supply	External
Cable Organization	No
Physical Controls	1, 2, Up, Down, Left, Right, Power
On Screen Display	Contrast/Brightness, Input Select, Audio Adjust, Color Adjust, Information, Manual Image Adjust, Setup Menu, Memory Recall
Temperature	32-104° F (0 - 40° C)

Humidity (non-condensing)	20-90%
VESA Compatible	400 x 200; 200 x 100
Frequency Horizontal	15 ~ 73 KHz
Frequency Vertical	47 ~ 75 Hz
Net (lbs)	28.2
Gross (lbs)	34.2
Net (kg)	12.8
Gross (kg)	15.5
Packaging (in.)	34 " (W) x 22.7 " (H) x 6.4 " (D)
Physical (in.)	29.4 " (W) x 17.8 " (H) x 2.5 " (D)
Packaging (mm)	863 mm (W) x 577 mm (H) x 163 mm (D)
Physical (mm)	747 mm (W) x 451 mm (H) x 64 mm (D)
Package Contents	LCD Display, Power Cable, HDMI to HDMI Cable, USB A to USB B cable, Quick Start Guide
Recycle/Disposal	Please dispose of in accordance with local, state or federal laws.
Warranty	Three-year limited warranty on parts, labor and backlight

UPC: 766907010466



Contact Sales

ViewSonic.com

888.881.8781

email: salesinfo@viewsonic.com