

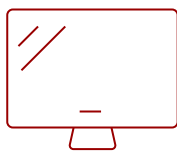
VIEWSONIC 4,000 LUMENS XGA SHORT THROW PROJECTOR WITH DUAL HDMI, USB-A | PS502X

Key Features

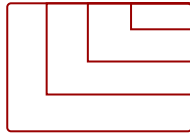
- Short Throw DLP Lamp Projector: XGA (1024x768p) resolution with a 0.6 throw ratio and 4,000 ANSI lumens for bright, detailed images in any space
- Vibrant Colors: SuperColor technology delivers a wide color gamut and stunningly beautiful images.
- Large Screen Projection: Projects screen sizes from 30" to 300" with a throw distance of 3.9 ft - 43 ft; displays a 100" image from 13 ft
- Easy Setup & Image Adjustment: Features 0.8x-2.0x digital zoom, vertical keystone, and auto keystone
- Instant Power On/Off: Enables quick startup and shutdown with optional settings for automatic power control
- Versatile Installation Options: Supports table or ceiling installation and is compatible with ViewSonic mounts PJ-WMK-305 and PJ-WMK-007.



60 - 300 in. / 1.5 - 7.6 m
DISPLAY



PANEL



VGA(640 x 480) to FullHD(1920 x 1080)
RESOLUTION



Product Description

Light up classrooms and conference rooms alike with the ViewSonic® PS502X XGA short throw projector.

Featuring 4,000 ANSI lumens of stunning brightness, this powerful business and education projector creates crystal clear images up to 300". And with a 0.616 short throw ratio, this projector is capable of displaying shadow-free 100" images from just 4.3 feet away.

The PS502X projector also comes with multiple connectivity options for greater convenience. Dual HDMI ports empower users to connect multiple devices directly to the projector. Once connected, users can conveniently switch between different input sources at the press of a button. A USB-A port provides power to wireless HDMI dongles for a more convenient streaming experience. Rather than taking your projector to the service center, software updates can be performed easily over a simple USB cable.

With the PS502X projector, you can let your presentations shine with stunning clarity.

Specifications

	More Information
UPC	766907020021
Light Source	DLP Lamp
Display Resolution	XGA (1024x768)
Display Resolution	1024 x 768
Brightness (Lumens)	4,000 ANSI
Screen Size	60 - 300 in. / 1.5 - 7.6 m
Throw Distance	0.75m-3.76m (77" @0.96m)
Throw Ratio	0.61
Keystone	Vertical (+/- 19°)
Lens	Fixed Zoom
Light Source (watt)	240
Light Source Life, Normal (hours)	4000
Light Source Life, Dynamic Eco-Mode (hours)	12000
Color Depth	1.07B Color (R/G/B 10bit)
Dynamic Contrast Ratio	15,000:1
Aspect Ratio	4:3
Input Lag	37ms
Frequency Horizontal	15K-102KHz
Frequency Vertical	23-120Hz
PC Resolution (max)	VGA(640 x 480) to FullHD(1920 x 1080)
Mac® Resolution (max)	480i, 480p, 576i, 576p, 720p, 1080i, 1080p
USB 2.0 Type A	1
3.5mm Audio Out	1
3.5mm Audio In	1
Control (RS232)	1
HDMI 1.4 (with HDCP 1.4)	2
VGA In	1
VGA Out	1
Internal Speakers	16W (x1)
Voltage	AC 100-240V (universal), 50-60Hz
Consumption (typical)	295W
Stand-by	<0.5W
Physical Controls	Keypad, Power key

On Screen Display

Display, Image, Power Management, Basic, Advanced, System, Information (See user guide for full OSD functionality)

Temperature

32-104° F (0 - 40° C)

Kensington Lock Slot

1

Net (lbs)

6.3

Gross (lbs)

9

Net (kg)

2.87

Gross (kg)

4.08

Packaging (in.)

15.7 x 13.3 x 6.6

Physical (in.)

12.2 x 9.2 x 4.5

Packaging (mm)

400 x 337 x 168

Physical (mm)

309 x 234 x 115

Regulations

cTUVus

Package Contents

Projector, power cable, remote control, Quick Start Guide

Warranty

3-year limited warranty on parts and labor, 1st year free Express Exchange® service**

Recycle/Disposal

Please dispose of in accordance with local, state or federal laws.

UPC: 766907020021



4,000 ANSI LUMENS
and XGA resolution



SHORT-THROW PROJECTOR
Ceiling or table-mounted, close to the screen



SOFTWARE UPDATES
via USB

Contact Sales

ViewSonic.com

888.881.8781

email:

salesinfo@viewsonic.com