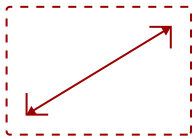
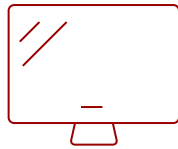
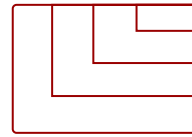


LDP216-121 - 216" ALL-IN-ONE PREMIUM 4K ULTRA HD DIRECT VIEW LED DISPLAY

Key Features

- Seamlessly Immersive
- Versatile Installation Orientation
- Super-Sized Video Walls
- Amazing Visuals
- Theater-Level Audio
- Enhanced Durability and Reliability
- Simple and Easy Setup
- Peace of Mind
- Device Management Made Easy
- Wireless Content Sharing
- Easy Maintenance

216
DISPLAYFine Pixel Pitch LED
PANEL3840x2160
RESOLUTION

Product Description

The ViewSonic® LDP216-121 All-in-One Direct View LED Display is a premium 216" larger-than-life digital screen that delivers an incredible audio-visual experience for any high-end corporate lobby, boardroom or conference room. Featuring a 120% Rec. 709 wide color gamut, lightning-fast 4,440Hz refresh rate, and a peak brightness of 600 nits, this display delivers true-to-life color and extraordinary detail for every video, presentation and lecture. The display is also equipped with Harman Kardon speakers, 4K/HDR/HLG support and PIP/PBP display modes for immersive content delivery. At 25mm slim and lined with a 5mm frameless edge, the sleek LDP216-121 exudes sophistication and elegance in any modern setting.

Specifications

More Information

UPC	766907015003
OS	Android 9.0
Media Player Type	Yes
CPU	MTK9669
Memory	4GB DDR4

Storage	64GB (56GB available)
Internal Speakers	20W (x2)
PC Resolution (max)	3840x2160
Mac® Resolution (max)	3840x2160
HDMI 1.4 In	2
HDMI 2.0 In	3
HDMI 2.1 In	1
HDMI 2.0 Out	2
3.5mm Audio In	1
3.5mm Audio Out	1
USB 2.0	3
USB Type C	1
RS232	1
Ethernet LAN (RJ45)	1
IR in	1
Voltage	100-120V/30A~ 50/60Hz or 220-240V/15A~ 50Hz(vary by country)
Consumption (max)	4900W
Consumption (typical)	3430W
Stand-by	<0.5W
On Screen Display	Yes
Remote Control	Yes
Temperature	32-104° F (0 - 40° C)
Humidity (non-condensing)	20-80%
Net (lbs)	925.9
Gross (lbs)	1168.5
Net (kg)	420
Gross (kg)	530
Packaging (in.)	109.5 x 33.5 x 50.4
Physical (in.)	189.3 x 111 x 1.4
Physical with Wall Mount (in.)	189.8 x 111 x 3
Packaging (mm)	2780 x 850 x 1280
Physical (mm)	4810 x 2820.3 x 35
Physical with Wall Mount (mm)	4810 x 2820.3 x 77
Warranty	3-year limited warranty on parts and labor, on-site service
Recycle/Disposal	Please dispose of in accordance with local, state or federal laws.


Package Contents	Power Cord x 2, Remote Control x1, QSG x 1, Maintenance Tool (LD-MK-002) x 1, LAN Cable (Cat 5A) x 1, IR Extender Cable x 1, Spart Modules (42), Wall Mount x 1
Regulations	cTUVus, FCC, RoHS
Battery Chemistry	Lithium
Wifi	2.4G / 5G n
Display Type	Direct View LED
Screen Size	216
Viewable Area (in.)	216
Orientation	Landscape / Portrait
Light Source	Fine Pixel Pitch LED
LED Pitch Size (mm)	1.25
LED Grayscale	Up to 14 bits
Display Resolution	3840 x 2160
Refresh Rate	3,840Hz
Panel Type	Fine Pixel Pitch LED
Aspect Ratio	16:9
Static Contrast Ratio	20,000:1 (Typical)
Backlight Life (Hours)	100,000
Brightness	500 cd/m2
Viewing Angles	170° horizontal, 170° vertical

UPC: 766907015003



Contact Sales

ViewSonic.com

888.881.8781 

email: salesinfo@viewsonic.com 