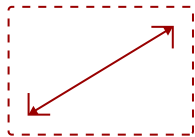


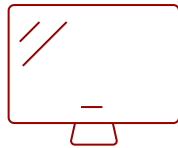
LD163-181 - 163" DISPLAY, 1920 X 1080 RESOLUTION, 600-NIT BRIGHTNESS, 24/7

## Key Features

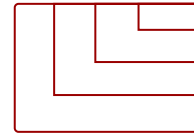
- All-in-One Solution
- Powerful Embedded SoC Platform
- Multi-Panel Modular Design for Easy Installation
- Vivid Colors and Stunning Images
- AV Control System Compatible



163  
DISPLAY



PANEL



RESOLUTION



## Product Description

The ViewSonic® LD163-181 is a premium all-in-one direct view LED commercial display. With a huge 163" screen size, the LD163-181 is built to impress as a centerpiece in any conference room, boardroom, or lobby. Along with its immense screen size, this display delivers stunning visuals with Full HD resolution, 1.8mm fine pixel pitch, 600-nit high brightness, 4,440Hz ultra-fast refresh rate, and 120% Rec.709 wide color gamut.

Integrated ViewBoard® Cast screen sharing software\* (along with optional ViewSonic vCastSender app), enables both on-site and online attendees to participate in video conferences and simultaneously share content. Equipped with twin dual-core processors, 4GB RAM, and 32GB of internal memory, the LD163-181 can play multimedia from internal storage or a USB flash drive 24 hours a day, seven days a week. And with remote configuration and content management system support, the ViewSonic LD163-181 is also suitable for a wide array of diverse signage applications.

\*Chrome, Android, Windows, Mac OS, and iOS compliant

## Specifications

### More Information

<b>UPC</b>	766907008791
<b>OS</b>	Android 8..0
<b>Media Player Type</b>	Yes
<b>GPU</b>	Mult-core MaliG51 MP2
<b>CPU</b>	Hi3751 V811
<b>Memory</b>	4GB DDR4
<b>Storage</b>	32GB (26GB available)
<b>Internal Speakers</b>	5W (x2)

<b>HDMI In</b>	2
<b>HDMI 1.4 Out (with HDCP 1.4)</b>	1
<b>HDMI 1.4 Out</b>	1
<b>3.5mm Audio Out</b>	1
<b>USB 3.0</b>	1
<b>USB 2.0</b>	2
<b>USB 2.0 Type B</b>	1
<b>RS232</b>	1
<b>Ethernet LAN (RJ45)</b>	1
<b>IR in</b>	1
<b>Voltage</b>	100-240V+/- 10%, (100-120V/30A, 50/60Hz ; 220-240V/15A)
<b>Consumption (max)</b>	2,660W
<b>Consumption (typical)</b>	1,860W
<b>Stand-by</b>	<0.5W
<b>On Screen Display</b>	Yes
<b>Remote Control</b>	Yes
<b>Temperature</b>	32-104° F (0 - 40° C)
<b>Humidity (non-condensing)</b>	20-80%
<b>Net (lbs)</b>	423.3
<b>Gross (lbs)</b>	661.4
<b>Net (kg)</b>	192.0
<b>Gross (kg)</b>	300.0
<b>Packaging (in.)</b>	82.7 x 32.1 x 33.5
<b>Physical (in.)</b>	142.6 x 84.4 x 1.4
<b>Packaging (mm)</b>	2100.0 x 815.0 x 850.0
<b>Physical (mm)</b>	3621.0 x 2143.5 x 35.0
<b>AV Control</b>	AMX Certified, Crestron Certified, Extron Certified
<b>Warranty</b>	3-year limited warranty on parts and labor, on-site service
<b>Recycle/Disposal</b>	Please dispose of in accordance with local, state or federal laws.
<b>Package Contents</b>	Power Cord, Remote Control, QSG, Wall-mount x 1, Maintenance Tool (LD-MK-001) x 1, Spare Modules (LED PCB x 2)
<b>Regulations</b>	cTUVus, FCC, RoHS, Mexico CoC, Mexico Energy
<b>Battery Chemistry</b>	Lithium
<b>Wifi</b>	802.11ac (2.4GHz/5GHz)
<b>Display Type</b>	Direct View LED
<b>Screen Size</b>	163

<b>Viewable Area (in.)</b>	163
<b>Light Source</b>	Fine Pixel Pitch LED
<b>LED Pitch Size (mm)</b>	1.875
<b>LED Grayscale</b>	14 bits
<b>Display Resolution</b>	1920 x 1080
<b>Refresh Rate</b>	4,440Hz
<b>Aspect Ratio</b>	16:9
<b>Static Contrast Ratio</b>	6,000:1
<b>Backlight Life (Hours)</b>	100,000
<b>Brightness</b>	600-nit
<b>Viewing Angles</b>	160° horizontal, 160° vertical
<b>Operation Rating</b>	24/7

UPC: 766907008791



### Contact Sales

[ViewSonic.com](http://ViewSonic.com)

888.881.8781

email: [salesinfo@viewsonic.com](mailto:salesinfo@viewsonic.com)