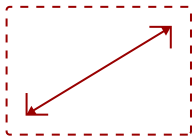


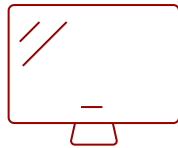
LD135-151 - 135" DISPLAY, 1920 X 1080 RESOLUTION, 600-NIT BRIGHTNESS, 24/7

Key Features

- All-in-One Solution
- Powerful Embedded SoC Platform
- Multi-Panel Modular Design for Easy Installation
- Vivid Colors and Stunning Images
- AV Control System Compatible



135"
DISPLAY



PANEL



RESOLUTION



Product Description

The ViewSonic® LD135-151 is a premium all-in-one direct view LED commercial display. With a huge 135" screen size, the LD135-151 is built to impress as a centerpiece in any conference room, boardroom, or lobby. Along with its immense screen size, this display delivers stunning visuals with Full HD resolution, 1.5mm fine pixel pitch, 600-nit high brightness, 4,440Hz ultra-fast refresh rate, and 120% Rec.709 wide color gamut.

Integrated ViewBoard® Cast screen sharing software* (along with optional ViewSonic vCastSender app), enables both on-site and online attendees to participate in video conferences and simultaneously share content. Equipped with twin dual-core processors, 4GB RAM, and 32GB of internal memory, the LD135-151 can play multimedia from internal storage or a USB flash drive 24 hours a day, seven days a week. And with remote configuration and content management system support, the ViewSonic LD135-151 is also suitable for a wide array of diverse signage applications.

*Chrome, Android, Windows, Mac OS, and iOS compliant

Specifications

More Information

UPC	766907008784
OS	Android 8.0
Media Player Type	Yes
GPU	Mult-core MaliG51 MP2
CPU	Hi3751 V811
Memory	4GB DDR4
Storage	32GB (26GB available)
Internal Speakers	5W (x2)

HDMI In	2
HDMI 1.4 Out (with HDCP 1.4)	1
HDMI 1.4 Out	1
3.5mm Audio Out	1
USB 3.0	1
USB 2.0	2
USB 2.0 Type B	1
RS232	1
Ethernet LAN (RJ45)	1
IR in	1
Voltage	100-240V+/- 10%, (100-120V/30A, 50/60Hz ; 220-240V/15A)
Consumption (max)	2,900W
Consumption (typical)	2,030W
Stand-by	<0.5W
On Screen Display	Yes
Remote Control	Yes
Temperature	32-104° F (0 - 40° C)
Humidity (non-condensing)	20-80%
Net (lbs)	297.6
Gross (lbs)	529.1
Net (kg)	135.0
Gross (kg)	240.0
Packaging (in.)	70.9 x 29.3 x 33.5
Physical (in.)	118.9 x 71.1 x 1.4
Packaging (mm)	1800 x 745.0 x 850.0
Physical (mm)	3020.9 x 1805.9 x 35.0
AV Control	AMX Certified, Crestron Certified, Extron Certified
Warranty	5-year limited warranty on parts and labor, on-site service
Recycle/Disposal	Please dispose of in accordance with local, state or federal laws.
Package Contents	Power Cord, Remote Control, QSG, Wall-mount x 1, Maintenance Tool (LD-MK-001) x 1, Spare Modules (LED PCB x 2)
Regulations	cTUVus, FCC, RoHS, Mexico CoC, Mexico Energy
Wifi	802.11ac (2.4GHz/5GHz)
Display Type	Direct View LED
Screen Size	135"
Viewable Area (in.)	135


Light Source	Fine Pixel Pitch LED
LED Pitch Size (mm)	1.56
LED Grayscale	14 bits
Display Resolution	1920 x 1080
Refresh Rate	4,440Hz
Aspect Ratio	16:9
Static Contrast Ratio	6,000:1
Backlight Life (Hours)	100,000
Brightness	600-nit
Viewing Angles	160° horizontal, 160° vertical
Operation Rating	24/7

UPC: 766907008784



Contact Sales

ViewSonic.com

888.881.8781 

email: salesinfo@viewsonic.com 