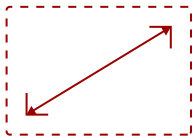
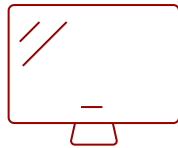


## CDE6520-W - 65" DISPLAY, 3840 X 2160 RESOLUTION, 450 CD/M2 BRIGHTNESS

## Key Features

- Ultra HD Resolution
- Powerful All-in-One SoC Platform
- Free ViewBoard® Cast Content Sharing Software
- Integrated Content Management System
- AV Control System Certified

65  
DISPLAYIPS  
PANEL

RESOLUTION



## Product Description

The ViewSonic® CDE6520-W is a 65" premium 4K large format presentation display. With features including a razor-sharp resolution of 3840 x 2160, 450-nit high brightness, 178-degree ultra-wide viewing angles, 2 x 16W speakers, and wireless screen sharing, the CDE6520-W transforms meeting rooms into a dynamic communications hub. The built-in ViewBoard® screen sharing software\*, ViewBoard® Cast (along with the optional ViewSonic® vCastSender app), enables both on-site and online users to participate in conferences and simultaneously share content. Equipped with twin dual-core processors, 3GB RAM, and 16GB of internal memory, the CDE6520-W can play multimedia from internal storage or a USB flash drive. And with remote configuration and content management system support, the ViewSonic® CDE6520-W is also suitable for a wide array of diverse signage applications. \*Chrome, Android, Windows, Mac OS, and iOS compliant

## Specifications

### More Information

<b>UPC</b>	766907004182
<b>Media Player Type</b>	Yes
<b>GPU</b>	Dual-core MaliG51 MP2
<b>CPU</b>	2 Dual-core Processors - Cortex A73 + A53 1.4GHz
<b>Memory</b>	3GB DDR4
<b>Storage</b>	16GB eMMC
<b>Internal Speakers</b>	16W (x2)
<b>HDMI 2.0 In (With CEC, HDCP 2.2)</b>	2

<b>VGA</b>	1
<b>DisplayPort</b>	1
<b>RCA Audio Out</b>	1
<b>SPDIF Audio Out</b>	1
<b>USB 3.0</b>	1
<b>USB 2.0</b>	2
<b>Slot-in PC Slot</b>	1
<b>RS232</b>	1
<b>Ethernet LAN (RJ45)</b>	1
<b>WIFI Module Slot</b>	1
<b>Voltage</b>	100-240 VAC +/- 10% Wide Range, 50-60Hz +/-3 Hz
<b>Consumption (max)</b>	300W
<b>Consumption (typical)</b>	220W
<b>Stand-by</b>	<0.5W
<b>Temperature</b>	32-104° F (0 - 40° C)
<b>Humidity (non-condensing)</b>	10-80%
<b>Net Without Stand (lbs)</b>	50.59
<b>Gross (lbs)</b>	70.07
<b>Net Without Stand (kg)</b>	22.95
<b>Gross (kg)</b>	33.60
<b>Packaging (in.)</b>	63.19 x 37.99 x 8.66
<b>Physical (in.)</b>	57.11 x 32.60 x 3.09
<b>Packaging (mm)</b>	1605.0 x 965.0 x 220.0
<b>Physical (mm)</b>	1450.6 x 828.1 x 78.5
<b>VESA Compatible</b>	400 x 200 mm
<b>Screw Size</b>	M6
<b>AV Control</b>	AMX Certified, Crestron Certified (Version 1.0), Extron Certified
<b>Warranty</b>	3-year limited warranty on parts, labor and backlight, onsite warranty
<b>Recycle/Disposal</b>	Please dispose of in accordance with local, state or federal laws.
<b>Package Contents</b>	CDE6520-W, Remote control with batteries, Quick Start Guide, Power cable (1.5m), HDMI Cable (3m), Wall Mount Screws and RS232 Adapter
<b>Regulations</b>	cTUVus, FCC, Energy Star, RoHS, Mexico CoC, Mexico Energy
<b>Screen Size</b>	65
<b>Viewable Area (in.)</b>	65
<b>Light Source</b>	DLED
<b>Display Resolution</b>	3840 x 2160

<b>Panel Type</b>	IPS
<b>Static Contrast Ratio</b>	1,200:1
<b>Backlight Life (Hours)</b>	50,000
<b>Brightness</b>	450 cd/m2
<b>Response Time (Typical GTG)</b>	8ms
<b>Viewing Angles</b>	178° horizontal, 178° vertical

UPC: 766907004182



### Contact Sales

[ViewSonic.com](http://ViewSonic.com)

888.881.8781

email: [salesinfo@viewsonic.com](mailto:salesinfo@viewsonic.com)