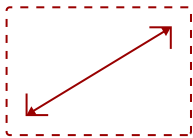


# IFP8670 - 86" 4K TOUCH ENABLED VIEWBOARD SMART DISPLAY WITH INTEGRATED CAMERA

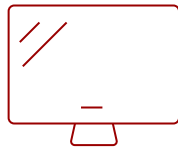
## Key Features

---

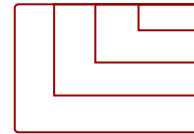
- High-Performance 4K Touchscreen
  - Sleek and Slim Design
  - Convenient USB Type-C
  - Improved Collaboration and Productivity
  - Smarter Meeting Rooms
  - Optional Slot-in PC
- 



86  
DISPLAY



PANEL



RESOLUTION

## Product Description

---

The ViewSonic® ViewBoard® IFP8670 is a Windows Collaboration Display (WCD) designed to help teams connect, collaborate, and create. Certified by Microsoft to provide the best Microsoft Office 365 and Team collaboration experience, this next-generation interactive display delivers exactly what you need to move your ideas forward. Equipped with a premium Skype-certified conference camera and microphone array, Microsoft Azure IoT sensor hub, and more, this ViewBoard Windows Collaboration Display fosters teamwork and boosts productivity. A premium, state-of-the-art design features a bezel-less PCAP (projected capacitive) touchscreen with incredible 4K Ultra HD resolution. This highly accurate interactive screen provides for an incredibly natural and responsive handwriting experience. Using fingers, styluses, or both, multiple users can simultaneously write or draw on the huge 86" ViewBoard panel. What's more, meetings and presentations start fast thanks to convenient one-wire USB-C connectivity.

## Specifications

---

### More Information

<b>UPC</b>	766907001990
<b>OS</b>	Embedded ViewBoard OS
<b>CPU</b>	ARM Quad Core Cortex A73 1.2GHz
<b>Memory</b>	4GB
<b>Storage</b>	32GB
<b>Built-in Software</b>	myViewBoard, Chromium browser, Zoom, ViewBoard Cast
<b>Internal Speakers</b>	10W (x2)

<b>Subwoofer</b>	15W (x1)
<b>HDMI 2.0 In</b>	1
<b>DisplayPort</b>	1
<b>3.5mm Audio Out</b>	1
<b>SPDIF Audio Out</b>	1
<b>USB 3.0</b>	2
<b>USB 3.1 Type C</b>	1
<b>Slot-in PC Slot</b>	1
<b>USB B Touch Port</b>	2
<b>RS232</b>	1
<b>Ethernet LAN (RJ45)</b>	1
<b>WIFI Module Slot</b>	1
<b>Sensor Hub Connector</b>	1
<b>Voltage</b>	100-240 VAC
<b>Consumption (typical)</b>	600W
<b>Stand-by</b>	<0.5W
<b>Temperature</b>	32-104° F (0 - 40° C)
<b>Humidity (non-condensing)</b>	10-90%
<b>Touch Technology</b>	Projective Capacitive
<b>Touch Points</b>	Windows: 20, Android: 20
<b>Tip Detection</b>	Finger or Active Pen
<b>Net (lbs)</b>	160.9
<b>Gross (lbs)</b>	209.4
<b>Net (kg)</b>	73.0
<b>Gross (kg)</b>	95.0
<b>Packaging (in.)</b>	83.6 x 53.1 x 11.0
<b>Physical (in.)</b>	77.2 x 45.1 x 3.3
<b>Packaging (mm)</b>	2123.0 x 1348.0 x 280.0
<b>Physical (mm)</b>	1960.9 x 1145.5 x 83.8
<b>VESA Compatible</b>	800 x 600 mm
<b>Warranty</b>	3-year limited warranty on parts, labor and backlight, onsite warranty
<b>Recycle/Disposal</b>	Please dispose of in accordance with local, state or federal laws.
<b>Package Contents</b>	IFP8670 display, IoT sensor, Camera, ActivePen x 2, pen charger, power cable, HDMI cable, USB cable, remote control with batteries, Camera plate, M8 screw x 8, Quick Start Guide
<b>Regulations</b>	cTUVus, FCC, ENERGY STAR, Mexico Energy, CE, CB, RoHS, ErP, WEEE
<b>Ethernet LAN</b>	1000M for Android & OPS


<b>Screen Size</b>	86
<b>Viewable Area (in.)</b>	85.6
<b>Light Source</b>	LED
<b>Display Resolution</b>	3840 x 2160
<b>Refresh Rate</b>	60Hz
<b>Aspect Ratio</b>	16:9
<b>Static Contrast Ratio</b>	1,200:1
<b>Dynamic Contrast Ratio</b>	5,000:1
<b>Backlight Life (Hours)</b>	50,000
<b>Brightness</b>	350 cd/m2
<b>Response Time (Typical GTG)</b>	8ms
<b>Viewing Angles</b>	178° horizontal, 178° vertical
<b>Panel Surface</b>	Anti-glare 7H tempered glass

UPC: 766907001990



### Contact Sales

[ViewSonic.com](http://ViewSonic.com)

888.881.8781 

email: [salesinfo@viewsonic.com](mailto:salesinfo@viewsonic.com) 