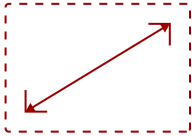


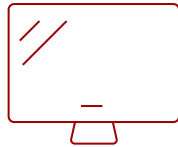
CDE5561T-S

## Key Features

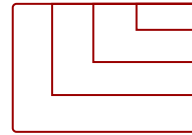
---



55  
DISPLAY



PANEL



RESOLUTION



## Product Description

---

The ViewSonic® CDE5561T 55" (54.6" viewable) Full HD ViewBoard® interactive flat panel display is a perfect solution for interactive business and educational classroom applications. This 10-point touch-enabled display, paired with PC-less operation and pre-installed ViewBoard® Lite annotation software, allows multiple users to simultaneously write or draw on the display's 7H hardness surface using fingers or styluses. 350-nit brightness and wide viewing angles provide better visual performance in well-lit rooms, while Flicker-Free and Blue Light filter technologies create a more comfortable viewing environment. With a built-in dual core processor and 8GB internal storage, as well as integrated versatile connectivity including multiple HDMI, VGA, RS232, RJ45 and USB ports, this display provides powerful computing for annotation and multimedia playback without the need for a PC. The CDE5561T features a VESA-compatible design and can be placed on a wall mount, or on an optional trolley cart for flexible installation in classrooms and corporate meeting rooms.

For more detailed information on how ViewSonic ViewBoards can best be utilized in a school environment, see our [ViewBoard FAQs](#).

## Specifications

---

### More Information

<b>UPC</b>	766907885316
<b>OS</b>	4.2.1
<b>CPU</b>	ARM Cortex A9 Dual Core CPU
<b>Memory</b>	1.5 GB
<b>Storage</b>	8GB
<b>Built-in Software</b>	Setting, Annotation, Viewboard Embedded, Interface
<b>Internal Speakers</b>	10-watt (x2)
<b>HDMI In</b>	3
<b>VGA</b>	1
<b>RCA Audio In</b>	3
<b>SPDIF</b>	1

<b>USB 3.0</b>	1
<b>USB 2.0</b>	3
<b>RS232</b>	1
<b>CVBS</b>	1
<b>Ethernet LAN (RJ45)</b>	1
<b>Voltage</b>	AC 100-240V (universal), 50-60Hz
<b>Consumption (typical)</b>	162W
<b>On Screen Display</b>	Input, Volume, Backlight, Audio, Screen, Display, Adjust
<b>Temperature</b>	32-104° F (0 - 40° C)
<b>Humidity (non-condensing)</b>	20-80%
<b>Touch Technology</b>	Resistive
<b>Touch Points</b>	10-Point Touch
<b>Net Without Stand (lbs)</b>	71.7
<b>Gross (lbs)</b>	92.6
<b>Net Without Stand (kg)</b>	32.5
<b>Gross (kg)</b>	42
<b>Packaging (in.)</b>	57.4 x 36.7 x 8.7
<b>Physical (in.)</b>	51.3 x 31.5 x 3.8
<b>Packaging (mm)</b>	1458 x 932 x 220
<b>Physical (mm)</b>	1304 x 800 x 97
<b>VESA Compatible</b>	400 x 400 mm
<b>Warranty</b>	*Refurbished. 30-day DOA policy for full refund, with a 90-day repair warranty on parts and labor.
<b>Recycle/Disposal</b>	Please dispose of in accordance with local, state or federal laws.
<b>Package Contents</b>	CDE5561T display, power cable, VGA cable, audio cable, USB cable, RS232 adapter, remote control with batteries, stylus (x3), ViewSonic Wizard CD (User Guide and ViewBoard software)
<b>Regulations</b>	FCC, cTUVus, CB, CE, RCM
<b>Classification</b>	Discontinued
<b>Screen Size</b>	55
<b>Viewable Area (in.)</b>	54.6
<b>Light Source</b>	LED
<b>Display Resolution</b>	1920 x 1080
<b>Aspect Ratio</b>	16:9
<b>Static Contrast Ratio</b>	1,200:1
<b>Backlight Life (Hours)</b>	50,000
<b>Brightness</b>	350 cd/m2
<b>Response Time (Typical GTG)</b>	8ms

**Viewing Angles**

178° horizontal, 178° vertical

**Panel Surface**


Anti-glare, Hard coating 7H

UPC: 766907885316



**Contact Sales**

[ViewSonic.com](http://ViewSonic.com)

888.881.8781 

email: [salesinfo@viewsonic.com](mailto:salesinfo@viewsonic.com) 