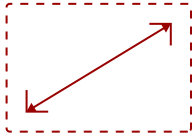
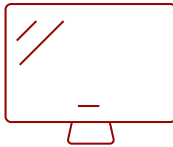


PJD6552LW-S

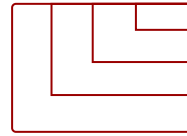
Key Features



30 - 300 in. / 0.76 - 7.62 m
DISPLAY



PANEL



1920 x 1080
RESOLUTION



Product Description

The ViewSonic® LightStream® PJD6552LW WXGA projector features 3,500 lumens, WXGA 1280 x 800 native resolution, an intuitive, user-friendly design and a sleek white chassis. Exclusive SuperColor™ technology offers a wide color gamut for beautiful image production in nearly any environment, while SonicExpert®, ViewSonic's proprietary sound enhancement technology, powers a 10W cube speaker to deliver incredibly clear and audible sound. PortAll®—a hidden compartment with an integrated and secure MHL/HDMI port—lets you discretely stream multimedia content from a wireless dongle, or lets you connect to other devices via an HDMI cable. A cable management hood eliminates unsightly cable clutter, and a top lamp door enables easy access for lamp maintenance. With shorter throw ratio, 1.3x optical zoom, H/V keystone correction, corner adjustments, and extensive connectivity, the PJD6552LW provides for flexible and quick set-ups. The PJD6552LW is the ideal projector for both high definition presentations and vibrant multimedia entertainment.

Specifications

	More Information
UPC	766907951615
Light Source	DLP Lamp
Display Resolution	WXGA (1280x800)
Display Resolution	1280 x 800
Brightness (Lumens)	3,500 ANSI
Screen Size	30 - 300 in. / 0.76 - 7.62 m
Throw Distance	3.3 - 32.8 ft. / 1.0 - 10.0 m
Throw Ratio	1.21~1.57
Keystone	Vertical ($\pm 30^\circ$) / Horizontal ($\pm 30^\circ$)
Lens	1.3x Manual optical zoom / manual optical focus
Light Source (watt)	210
Light Source Life, Normal (hours)	4000

Light Source Life, Dynamic Eco-Mode (hours)	10000
Color Depth	30 bits, 1.07B Color (10+10+10)
Dynamic Contrast Ratio	22,000:1
Aspect Ratio	16:10
Input Lag	37ms
Frequency Horizontal	15-102KHz
Frequency Vertical	23-120Hz
PC Resolution (max)	1920 x 1080
Mac® Resolution (max)	1920 x 1080
Ethernet LAN (RJ45)	1
3.5mm Audio Out	1
3.5mm Audio In	2
Control (RS-232)	1
HDMI 1.4 In	1
HDMI MHL	1
VGA In	2
VGA Out	1
Composite RCA Video In	1
Mini USB	1
RGB Input	15-pin mini D-Sub (x2)
Internal Speakers	10W (x1)
Voltage	100~240VAC (Auto Switching), 50-60Hz (universal)
Consumption (max)	330W
Stand-by	<0.5W
Physical Controls	Power, keystone/arrow keys, left/blank, menu/exit, right/panel key lock, mode/enter, auto, source
On Screen Display	Display, Picture, Source, System Setup (Basic), System Setup (Advanced), Information(See user guide for full OSD functionality)
Temperature	32-104° F (0 - 40° C)
Humidity (non-condensing)	10-90%
Normal	32dB
Eco-Mode	27dB
Net Without Stand (lbs)	5.1
Gross (lbs)	8.8
Net Without Stand (kg)	2.3
Gross (kg)	4
Packaging (in.)	16.0 x 17.72 x 8.85

Physical Without Stand (in.)	12.44 x 8.98 x 4.08
Packaging (mm)	410 x 450 x 225
Physical Without Stand (mm)	316 x 228 x 103.7
AV Control	AMX Certified, ATEN Certified, Crestron Certified, PJ Link Certified
Regulations	CB, TUV-GS, UL/cUL, FCC (including ICES-003), CE, C-Tick, Mexico Energy test/Registration, EAC, UkrSEPRO/EMC DOC, UL COC, TUV- Mark (Argentina), PSB, KCC, KC, SASO, CCC, WEEE, RoHS, REACH, SVHC, ErP
Package Contents	PJD6552LW projector, power cable, VGA cable, remote control with laser (batteries included), Quick Start Guide, ViewSonic Wizard CD (with User Guide)
Warranty	*Refurbished. 30-day DOA policy for full refund, with a 90-day repair warranty on parts and labor.
Recycle/Disposal	Please dispose of in accordance with local, state or federal laws.
Classification	Discontinued

UPC: 766907951615



Contact Sales

ViewSonic.com

888.881.8781

email: salesinfo@viewsonic.com