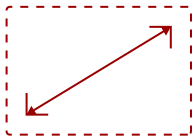


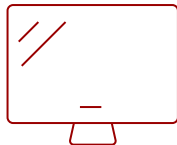
VG2439SMH-S

## Key Features

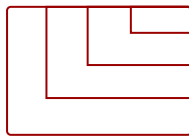
---



24"  
DISPLAY



MVA  
PANEL



1920 x 1080  
RESOLUTION



## Product Description

---

The ViewSonic® VG2439Smh is a 24" (23.6" viewable) Full HD LED multimedia monitor with future-proof connectivity and full ergonomic functionality ideal for corporate, government and education. With SuperClear® MVA panel technology for wide-angle viewing, and 20M:1 dynamic contrast ratio, this monitor delivers incredibly sharp images and video playback. Integrated with HDMI, DisplayPort, VGA and 2 USB ports, the VG2439Smh allows flexible connection to PC systems, laptops and other multimedia peripheral devices. ViewSonic's exclusive ViewMode provides intuitive presets to deliver optimized screen performance in different applications. In addition, Flicker-Free and Blue Light Filter technology help to eliminate eye strain from extended viewing periods. The LED backlight design makes this display Energy Star certified.

## Specifications

---

### More Information

UPC	766907871319
Screen Size	24"

<b>Viewable Area (in.)</b>	23.6
<b>Panel Type</b>	MVA
<b>Display Resolution</b>	1920 x 1080
<b>Dynamic Contrast Ratio</b>	20,000,000:1
<b>Light Source</b>	LED
<b>Brightness</b>	250 cd/m2
<b>Colors</b>	16.7M
<b>Response Time (Typical GTG)</b>	5ms
<b>Viewing Angles</b>	178° horizontal, 178° vertical
<b>Backlight Life (Hours)</b>	40,000
<b>Panel Surface</b>	3H Anti-glare, hard-coating
<b>PC Resolution (max)</b>	1920 x 1080
<b>Mac® Resolution (max)</b>	1920 x 1080
<b>USB 2.0 Type A</b>	2
<b>USB 2.0 Type B</b>	1
<b>3.5mm Audio In</b>	1
<b>3.5mm Audio Out</b>	1
<b>HDMI In</b>	1
<b>VGA</b>	1
<b>DisplayPort</b>	1
<b>Internal Speakers</b>	2-watt (x2)
<b>Eco Mode (Conserve)</b>	16W
<b>Eco Mode (optimized)</b>	19W
<b>Consumption (typical)</b>	23W
<b>Consumption (max)</b>	36W
<b>Voltage</b>	AC 100-240V (universal), 50-60Hz
<b>Cable Organization</b>	No
<b>Kensington Lock Slot</b>	1
<b>Physical Controls</b>	1, 2, Down, Up, Power
<b>On Screen Display</b>	Auto Image Adjust, Contrast/Brightness, Input Select, Audio Adjust, Color Adjust, Information, Manual Image Adjust, Setup Menu, Memory Recall (See user guide for complete OSD functionality)
<b>Temperature</b>	32-104° F (0 - 40° C)
<b>Humidity (non-condensing)</b>	20-90%
<b>VESA Compatible</b>	100 x 100 mm
<b>Frequency Horizontal</b>	24~82kHz
<b>Frequency Vertical</b>	50~75Hz

<b>Analog Sync</b>	Separate Sync, Composite Sync, Sync on Green
<b>Height Adjust</b>	135 mm / 5.3 in
<b>Swivel</b>	360°
<b>Pivot (Right/Left)</b>	90° / 0°
<b>Regulations</b>	WEEE, RoHS, CE, CB, WHQL, UL/cUL, FCC-B, ENERGY STAR 7.0, REACH SVHC list & DoC, EEL, Mexico Energy, UkrSEPRO+Doc, ErP,
<b>Net (lbs)</b>	11.4
<b>Net Without Stand (lbs)</b>	8.2
<b>Gross (lbs)</b>	15.3
<b>Net (kg)</b>	5.2
<b>Net Without Stand (kg)</b>	3.7
<b>Gross (kg)</b>	6.9
<b>Packaging (in.)</b>	25 x 20 x 7.5
<b>Physical (in.)</b>	22.1 x 17.1 x 9.4
<b>Physical Without Stand (in.)</b>	22.1 x 13.1 x 2.3
<b>Packaging (mm)</b>	634 x 508 x 190
<b>Physical (mm)</b>	560.3 x 435.2 x 239.6
<b>Physical Without Stand (mm)</b>	560.3 x 332.7 x 58.2
<b>Package Contents</b>	VG2439Smh monitor, Power cable, VGA cable, DisplayPort cable, Audio cable, USB cable, Quick Start Guide, ViewSonic Wizard CD (User Guide)
<b>Recycle/Disposal</b>	Please dispose of in accordance with local, state or federal laws.
<b>Warranty</b>	*Refurbished. 30-day DOA policy for full refund, with a 90-day repair warranty on parts and labor.
<b>Classification</b>	Discontinued, Refurbished

UPC: 766907871319



### Contact Sales

[ViewSonic.com](http://ViewSonic.com)

888.881.8781

email:

[salesinfo@viewsonic.com](mailto:salesinfo@viewsonic.com)