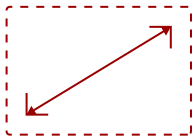


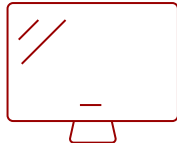
VA2055SM-S

## Key Features

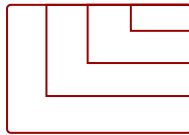
---



20"  
**DISPLAY**



MVA  
**PANEL**



1920 x 1080  
**RESOLUTION**



## Product Description

---

The ViewSonic® VA2055Sm features a 20" (19.5" viewable) Full HD SuperClear® MVA widescreen panel with integrated dual 2W speakers. The monitor offers 1920x1080 resolution, 3,000:1 Contrast Ratio, VGA & DVI inputs, and a VESA-compatible mount design. In addition, Flicker-Free and Blue Light Filter technology help to eliminate eye strain from extended viewing periods. ViewSonic's exclusive ViewMode™ provides intuitive presets to deliver optimized screen performance in different applications. Lastly, with a 3-year limited warranty, one of the industry's best pixel performance policies, ENERGY STAR and EPEAT certification, and an energy-saving Eco-mode, the VA2055Sm is a great long-term investment for any of your entertainment or professional needs.

## Specifications

---

---

### More Information

<b>UPC</b>	766907871517
<b>Screen Size</b>	20"

---


<b>Viewable Area (in.)</b>	19.5
<b>Panel Type</b>	MVA
<b>Display Resolution</b>	1920 x 1080
<b>Light Source</b>	LED
<b>Brightness</b>	250 cd/m2
<b>Colors</b>	16.7M
<b>Aspect Ratio</b>	16:9
<b>Response Time (Typical GTG)</b>	25ms
<b>Viewing Angles</b>	178° horizontal, 178° vertical
<b>Backlight Life (Hours)</b>	40,000
<b>Panel Surface</b>	3H Anti-glare, hard-coating
<b>PC Resolution (max)</b>	1920 x 1080
<b>Mac® Resolution (max)</b>	1920 x 1080
<b>3.5mm Audio In</b>	1
<b>3.5mm Audio Out</b>	1
<b>VGA</b>	1
<b>DVI-D</b>	1
<b>Internal Speakers</b>	2-watt (x2)
<b>Eco Mode (Conserve)</b>	14W
<b>Eco Mode (optimized)</b>	18W
<b>Consumption (typical)</b>	22W
<b>Consumption (max)</b>	35W
<b>Voltage</b>	AC 100-240V (universal), 50-60Hz
<b>Cable Organization</b>	No
<b>Kensington Lock Slot</b>	1
<b>Physical Controls</b>	1, 2, Down, Up, Power
<b>On Screen Display</b>	Auto Image Adjust, Contrast/Brightness, Input Select, Audio Adjust, Color Adjust, Information, Manual ImageAdjust, Setup Menu, Memory Recall(See user guide for complete OSD functionality)
<b>Temperature</b>	32-104° F (0 - 40° C)
<b>Humidity (non-condensing)</b>	20-90%
<b>VESA Compatible</b>	100 x 100 mm
<b>Frequency Horizontal</b>	24~82kHz
<b>Frequency Vertical</b>	50~75Hz
<b>Analog Sync</b>	Separate Sync, Composite Sync, Sync on Green
<b>Tilt (Forward/Back)</b>	6° / 22°
<b>Regulations</b>	US NRTL w/CA (cULus/cTUVus/cETLus/cBVus), FCC-Bw/ ICES003, ENERGY STAR, Mexico, Mexico Energy

<b>Net (lbs)</b>	6.2
<b>Net Without Stand (lbs)</b>	5.4
<b>Gross (lbs)</b>	8.8
<b>Net (kg)</b>	2.8
<b>Net Without Stand (kg)</b>	2.5
<b>Gross (kg)</b>	4.0
<b>Packaging (in.)</b>	20.9 x 15.9 x 4.3
<b>Physical (in.)</b>	18.6 x 13.7 x 8.3
<b>Physical Without Stand (in.)</b>	18.6 x 11.3 x 1.9
<b>Packaging (mm)</b>	531 x 405 x 110
<b>Physical (mm)</b>	472.2 x 349.1 x 211.7
<b>Physical Without Stand (mm)</b>	472.2 x 287.8 x 47.5
<b>Package Contents</b>	VA2055Sm monitor, Power cable, VGA cable, DVI cable, Quick Start Guide
<b>Recycle/Disposal</b>	Please dispose of in accordance with local, state or federal laws.
<b>Warranty</b>	*Refurbished. 30-day DOA policy for full refund, with a 90-day repair warranty on parts and labor.
<b>Classification</b>	Discontinued, Refurbished

UPC: 766907871517



**Contact Sales**  
[ViewSonic.com](http://ViewSonic.com)

888.881.8781   
 email: [salesinfo@viewsonic.com](mailto:salesinfo@viewsonic.com)