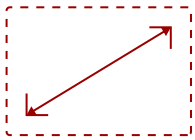


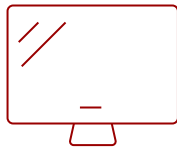
VG2457V - 24" 1080P VIDEO CONFERENCING MONITOR WITH WINDOWS HELLO COMPATIBLE IR WEBCAM, 90W USB-C, RJ45 ETHERNET

## Key Features

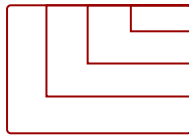
---



24"  
DISPLAY



IPS  
PANEL



1920 X 1080  
RESOLUTION



## Product Description

---

ViewSonic VG2457V video conferencing monitor is a docking monitor with premium features such as a pop-up webcam that will help maintain productive meetings whether in the office or working from home, with secure features like a Windows Hello compatible IR camera and Zoom certification for peace of mind on security and reliable conferencing. Premium webcam features to improve visual and audio aspects of video calls such as built in LED lighting, and a front firing speaker bar. The IR camera allows for secure and easy sign-on with Windows Hello. Full docking functionality (daisy chain, USB-C single cable connectivity with 90W power delivery, reliable ethernet connectivity) simplifies accessories needed to deploy for IT infrastructure.

## Specifications

---

[More Information](#)

UPC

766907027921

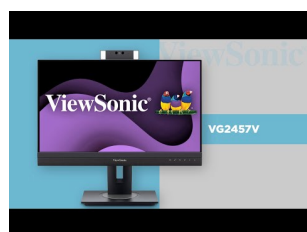
<b>Screen Size</b>	24"
<b>Viewable Area (in.)</b>	23.8
<b>Panel Type</b>	IPS
<b>Display Resolution</b>	1920 x 1080
<b>Display Resolution</b>	Full HD (1920x1080)
<b>Static Contrast Ratio</b>	1,300:1
<b>Dynamic Contrast Ratio</b>	80M:1
<b>Light Source</b>	LED
<b>Brightness</b>	250 cd/m2
<b>Color Space Support</b>	8 bit (6 bit + FRC)
<b>Aspect Ratio</b>	16:9
<b>Response Time (Typical GTG)</b>	5ms
<b>Viewing Angles</b>	178° horizontal, 178° vertical
<b>Backlight Life (Hours)</b>	30,000
<b>Panel Surface</b>	Anti-Glare type, Hard-coating (3H), Haze 25%
<b>Refresh Rate</b>	100Hz
<b>PC Resolution (max)</b>	1920 X 1080
<b>Mac® Resolution (max)</b>	1920 X 1080
<b>USB Type A</b>	2
<b>USB Type C</b>	2
<b>3.5mm Audio Out</b>	1
<b>Ethernet LAN (RJ45)</b>	1
<b>HDMI 1.4 In</b>	1
<b>DisplayPort</b>	1
<b>DisplayPort Out</b>	1
<b>Internal Speakers</b>	5W (x2)
<b>Eco Mode (Conserve)</b>	119
<b>Eco Mode (optimized)</b>	121.8
<b>Consumption (typical)</b>	124.4
<b>Consumption (max)</b>	167.8
<b>Voltage</b>	100-240 VAC, 50-60Hz
<b>Stand-by</b>	0.5
<b>Power Supply</b>	Internal
<b>Cable Organization</b>	No
<b>Kensington Lock Slot</b>	1
<b>Webcam</b>	Yes

<b>Physical Controls</b>	Key 1 (eye), Key 2, Key 3, Key 4, Key 5, Key 6 (power)
<b>On Screen Display</b>	Input Select, Conference Mode, ViewMode, Color Adjust, Manual Image Adjust, Setup Menu
<b>Temperature</b>	32-104° F (0 - 40° C)
<b>Humidity (non-condensing)</b>	20-90%
<b>VESA Compatible</b>	100 x 100 mm
<b>Frequency Horizontal</b>	15 ~ 110 KHz
<b>Frequency Vertical</b>	Fv = 50 ~ 100 Hz
<b>Height Adjust</b>	110 mm / 4.3 in
<b>Swivel</b>	60°
<b>Pivot (Right/Left)</b>	90° / 90°
<b>Tilt (Forward/Back)</b>	5° / 40°
<b>Regulations</b>	cTUVus, FCC-B ICES003, Energy Star, EPEAT, CEC, NOM, Mexico Energy
<b>Net (lbs)</b>	15.1
<b>Net Without Stand (lbs)</b>	10
<b>Gross (lbs)</b>	21.3
<b>Net (kg)</b>	6.9
<b>Net Without Stand (kg)</b>	4.6
<b>Gross (kg)</b>	9.7
<b>Packaging (in.)</b>	23.9 " (W) x 16.2 " (H) x 8.3 " (D)
<b>Physical (in.)</b>	21.22 " (W) x 15.82~20.15 " (H) x 7.96 " (D)
<b>Physical Without Stand (in.)</b>	21.22 " (W) x 13.74 " (H) x 2.2 " (D)
<b>Packaging (mm)</b>	606 mm (W) x 411 mm (H) x 210 mm (D)
<b>Physical (mm)</b>	539.04 mm (W) x 401.83~511.83 mm (H) x 202.18 mm (D)
<b>Physical Without Stand (mm)</b>	539.04 mm (W) x 349 mm (H) x 55.8 mm (D)
<b>Package Contents</b>	LCD Display, Power Cable, HDMI to HDMI Cable, USB Type-C Cable (Male-Male; with Type-A adapter), Quick Start Guide
<b>Recycle/Disposal</b>	Please dispose of in accordance with local, state or federal laws.
<b>Warranty</b>	*Refurbished. 30-day DOA policy for full refund, with a 90-day repair warranty on parts and labor.

UPC: 766907027921



**EXPERIENCE  
CRYSTAL CLEAR MEETINGS**



**WINDOWS HELLO CERTIFIED**  
Facial Recognition for Safe Single User Sign-On

**Contact Sales**  
**[ViewSonic.com](http://ViewSonic.com)**

888.881.8781  
email:  
[salesinfo@viewsonic.com](mailto:salesinfo@viewsonic.com)