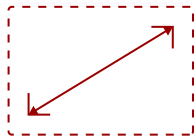


## PRE-CONFIGURED 1080P ALL-IN-ONE DVLED DISPLAYS | LDE108-123

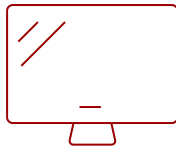
### Key Features

---

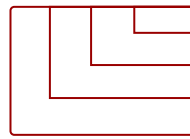
- **INNOVATIVE ALL-IN-ONE DESIGN:** Simplified setup includes everything needed already built into cabinets.
- **OUTSTANDING PRICE-PERFORMANCE:** High-impact dvLED technology that maximizes your investment.
- **GLUE-ON-BOARD TECHNOLOGY:** Protects LEDs from damage and moisture in high-traffic environments.
- **SIMPLIFIED OS:** Streamlines setup, operation, and security.
- **HOT-SWAPPABLE MODULES:** Easy front-serviceable maintenance and includes spare tiles.



108"  
**DISPLAY**



Direct View LED SMD + Glue-on-Board  
**PANEL**



3840x2160  
**RESOLUTION**



### Product Description

---

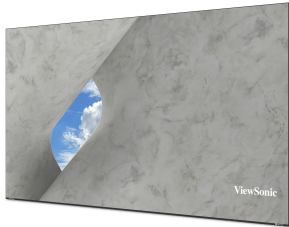
The ViewSonic® LDE108-123 is a 108" all-in-one Direct View LED (dvLED) display. It's part of our LDE Series, designed to deliver outstanding price-performance and simplified dvLED technology. The 108" screen size is the ideal solution for medium-sized rooms where a larger LCD display simply won't fit through the door. The LDE108-123 features an innovative, fully integrated All-in-One design with a simplified OS. Everything you need is built directly into the cabinets, which allows for easier installation and operation. The complete solution ships together and can be ordered with a single SKU, making setup a breeze. This display is also built to last. It uses durable Glue-on-Board technology with an IP54 dust and moisture rating and an IK06 impact rating. You can confidently use it in busy lobbies, classrooms, or conference rooms. With 600-nit brightness and a 6,500:1 contrast ratio, it delivers a vivid, exceptional viewing experience, representing a premier value in large-format displays.

# Specifications

	More Information
<b>UPC</b>	766907042696
<b>CPU</b>	RK3588
<b>Internal Speakers</b>	8W (x2)
<b>PC Resolution (max)</b>	3840x2160
<b>Mac® Resolution (max)</b>	3840x2160
<b>HDMI 2.0 (with HDCP 2.2)</b>	1
<b>HDMI 1.4 (with HDCP 1.4)</b>	1
<b>HDMI 1.4 Out (with HDCP 1.4)</b>	1
<b>3.5mm Audio Out</b>	1
<b>USB Type A</b>	1
<b>USB 3.0</b>	2
<b>RS232</b>	1
<b>Ethernet LAN (RJ45)</b>	1
<b>Voltage</b>	100-120V/20A ~ 50/60Hz
<b>Stand-by</b>	<0.5W
<b>On Screen Display</b>	Yes
<b>Remote Control</b>	Yes
<b>Temperature</b>	32-104° F (0 - 40° C)
<b>Humidity (non-condensing)</b>	20-80%
<b>Physical (in.)</b>	94.96 x 53.62 x 1.22
<b>Physical with Wall Mount (in.)</b>	94.96 x 53.62 x 2.2
<b>Physical (mm)</b>	2412 x 1362 x 31
<b>Physical with Wall Mount (mm)</b>	2412 x 1362 x 56
<b>Warranty</b>	3-year limited warranty
<b>Recycle/Disposal</b>	Please dispose of in accordance with local, state or federal laws.
<b>Package Contents</b>	Power Cord, LAN Cable, Remote Control, Installation Guide, Wall Mount, LD-MK-004, LD-MK-006 "
<b>Regulations</b>	cTUVus, FCC, RoHS
<b>Display Type</b>	Direct View LED
<b>Screen Size</b>	108"
<b>LED Pitch Size (mm)</b>	1.2
<b>LED Grayscale</b>	13 bits
<b>Display Resolution</b>	1920 x 1080
<b>Refresh Rate</b>	3,840Hz

<b>Panel Type</b>	Direct View LED SMD + Glue-on-Board
<b>Aspect Ratio</b>	16:9
<b>Static Contrast Ratio</b>	6,500:1
<b>Backlight Life (Hours)</b>	100,000
<b>Brightness</b>	600 nits (100 levels adjustable)
<b>Viewing Angles</b>	170° horizontal, 170° vertical
<b>Impact Protection Rating</b>	IK06 (Front)

UPC: 766907042696



**Contact Sales**  
[ViewSonic.com](http://ViewSonic.com)  
 888.881.8781  
 email:  
[salesinfo@viewsonic.com](mailto:salesinfo@viewsonic.com)