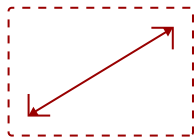




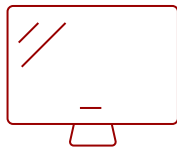
65" OS-FREE COMMERCIAL DISPLAY, 3840 X 2160 RESOLUTION, 500 CD/M2 HIGH BRIGHTNESS, 24/7 OPERATION RATING, HDMIX3, USB-C, 3.5MM AUDIO IN/OUT, AV CONTROL SYSTEM INTEROPERABILITY, LANDSCAPE AND PORTRAIT MODE

Key Features

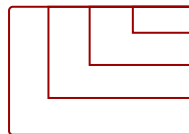
- **OPTIMIZED FOR VIDEOCONFERENCING:** Clear 4K visuals and reliable performance for smooth, professional meetings.
- **FAST STARTUP:** Boots in seconds so meetings start on time, every time.
- **SIMPLE CONNECTIVITY:** One USB-C cable plus HDMI for quick, easy laptop connections.
- **SEAMLESS AV INTEGRATION:** Certified for Q-SYS, compatible with Crestron, Extron, and AMX.
- **FLEXIBLE INSTALLATION:** Supports portrait or landscape mounting to fit any space.



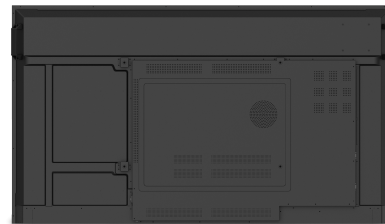
65"
DISPLAY



VA
PANEL



RESOLUTION



Product Description

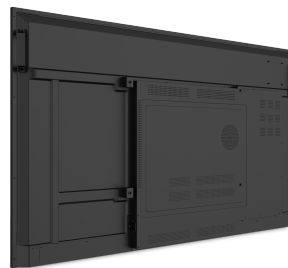
The ViewSonic® CDE65G3 is a 65" commercial display designed to make meetings, trainings, and videoconferences fast, simple, and professional. Its 4K UHD resolution ensures crisp visuals for presentations and video calls, while 24/7 commercial-grade reliability keeps it running smoothly in huddle rooms, conference rooms, and executive offices. Booting in as fast as 8 seconds, the CDE65G3 gets your meetings started on time without delays. A single USB-C cable plus HDMI lets you easily connect laptops, share content, and power devices, making setup quick and effortless. Q-SYS certified and compatible with Crestron, Extron, and AMX, it integrates seamlessly into existing AV systems. With no operating system to manage, this OS-free display reduces security risks and IT complexity, giving your team a safer, low-maintenance solution. The versatile 65" size fits perfectly in a variety of meeting spaces while delivering big-screen impact.

Specifications

	More Information
UPC	766907035704
Internal Speakers	10-watt (x2)
Voltage	100-240 VAC +/- 10% Wide Range, 50-60Hz +/-3 Hz
Consumption (max)	145.8W
Consumption (typical)	101.7W
Stand-by	<0.5W
Temperature	32-104° F (0 - 40° C)
Humidity (non-condensing)	20-80%
CPU	MTK 3683
Media Player Type	Yes
Screen Size	65"
Viewable Area (in.)	64.5
Orientation	Landscape / Portrait
Colors	1.07B
Color Space Support	100% sRGB (8 bit + FRC)
Light Source	DLED
Display Resolution	3840 x 2160
Refresh Rate	60Hz
Panel Type	VA
Aspect Ratio	16:9
Static Contrast Ratio	5,000:1
Viewing Angles	178° horizontal, 178° vertical
Backlight Life (Hours)	50,000
Response Time (Typical GTG)	6.5ms
Brightness	500 cd/m2
Panel Surface	Anti-Glare type, Hard-coating (3H), Haze 25%
Operation Rating	24/7
Gross (kg)	31.1
Net (kg)	22.8
Net (lbs)	50.16
Gross (lbs)	68.6
USB 2.0	2
USB Type C	1

RS232 In	1
HDMI 2.1 In	3
VGA	1
Ethernet LAN (RJ45)	1
3.5mm Audio In	1
3.5mm Audio Out	1
SPDIF	1
Packaging (mm)	1640 x 960 x 185
Bezel Width (mm)	15.9
Physical (mm)	1466.7 x 841 x 79.7
Packaging (in.)	63.96 x 37.44 x 7.22
Bezel Width (in.)	0.625
Physical (in.)	57.74 x 33.11 x 3.14
VESA Compatible	600 x 400 mm
Regulations	cTUus, FCC, Energy Star 8.0, RoHS, Mexico NOM, Mexico Energy
Package Contents	CDE65G3 Commercial Display, Remote control with batteries, Quick Start Guide, Power cable (3m), HDMI Cable (3m), Wall Mount Screws (x4) and RS232 adapter
Recycle/Disposal	Please dispose of in accordance with local, state or federal laws.
Warranty	Three-year limited warranty on parts, labor and backlight

UPC: 766907035704



Contact Sales
ViewSonic.com

888.881.8781
 email:
salesinfo@viewsonic.com