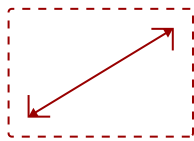
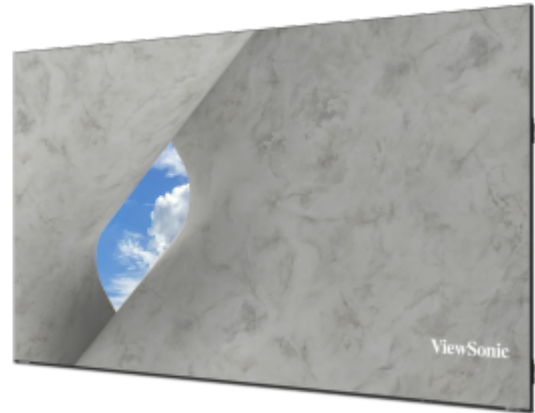


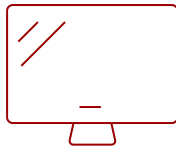
136" ALL-IN-ONE DIRECT VIEW LED DISPLAY | LDE136G-152

Key Features

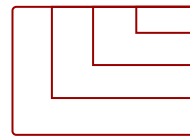
- **INNOVATIVE ALL-IN-ONE DESIGN:** Simplified setup includes everything needed already built into cabinets.
- **OUTSTANDING PRICE-PERFORMANCE:** High-impact dvLED technology that maximizes your investment.
- **GLUE-ON-BOARD TECHNOLOGY:** Protects LEDs from damage and moisture in high-traffic environments.
- **SIMPLIFIED OS:** Streamlines setup, operation, and security.
- **HOT-SWAPPABLE MODULES:** Easy front-serviceable maintenance and includes spare tiles.



136"
DISPLAY



Direct View LED SMD + Glue-on-Board
PANEL



3840x2160
RESOLUTION



Product Description

The ViewSonic® LDE136G-152 is a 136" all-in-one Direct View LED (dvLED) display. It's part of our LDE Series, designed to deliver outstanding price-performance and simplified dvLED technology. This line is perfect for schools and businesses seeking a high-impact solution that maximizes their investment. The LDE136G-152 features an innovative, fully integrated All-in-One design with a simplified OS. Everything you need is built directly into the cabinets, which allows for easier installation and operation. The complete solution ships together and can be ordered with a single SKU, making setup a breeze. This display is also built to last. It uses durable Glue-on-Board technology with an IP54 dust and moisture rating and an IK06 impact rating. You can confidently use it in busy lobbies, classrooms, or conference rooms. With 600-nit brightness and a 6,500:1 contrast ratio, it delivers a vivid, exceptional viewing experience, representing a premier value in large-format displays.

Specifications

UPC	766907038156
CPU	RK3588
CPU	RK3588
Internal Speakers	8W (x2)
PC Resolution (max)	3840x2160
Mac® Resolution (max)	3840x2160
HDMI 2.0 (with HDCP 2.2)	1
HDMI 1.4 (with HDCP 1.4)	1
HDMI 1.4 Out (with HDCP 1.4)	1
3.5mm Audio Out	1
USB 3.0	2
RS232	1
Ethernet LAN (RJ45)	1
Voltage	100-120V/20A ~ 50/60Hz
Consumption (max)	1600W
Consumption (typical)	533W
Stand-by	<0.5W
On Screen Display	Yes
Remote Control	Yes
Temperature	32-104° F (0 - 40° C)
Humidity (non-condensing)	20-80%
Physical (in.)	118.58 x 67.28 x 2.05
Physical with Wall Mount (in.)	118.58 x 67.28 x 2.43
Physical (mm)	3012 x 1708.9 x 52
Physical with Wall Mount (mm)	3012 x 1708.9 x 61.7
Package Contents	Power Cord, LAN Cable, Remote Control, Installation Guide, Wall Mount, LD-MK-004, LD-MK-006
Regulations	cTUVus, FCC, RoHS
Display Type	Direct View LED
Screen Size	136"
Light Source	DLED
LED Pitch Size (mm)	1.56
LED Grayscale	13 bit
Display Resolution	1920 x 1080
Refresh Rate	3,840Hz
Panel Type	Direct View LED SMD + Glue-on-Board
Aspect Ratio	16:9

Static Contrast Ratio	6,500:1
Backlight Life (Hours)	100,000
Brightness	600-nit
Viewing Angles	170° horizontal, 170° vertical
Impact Protection Rating	IK06 (Front)
Operation Rating	24/7

UPC: 766907038156



Contact Sales
ViewSonic.com
888.881.8781
email:
salesinfo@viewsonic.com