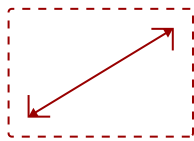
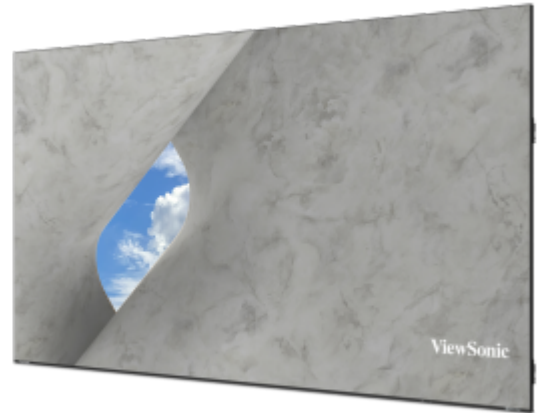


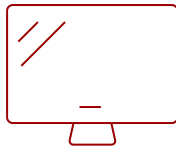
163" ALL-IN-ONE DIRECT VIEW LED DISPLAY | LDE163G-182

Key Features

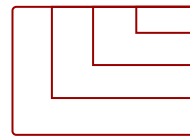
- **INNOVATIVE ALL-IN-ONE DESIGN:** Simplified setup includes everything needed already built into cabinets.
 - **OUTSTANDING PRICE-PERFORMANCE:** High-impact dvLED technology that maximizes your investment.
 - **GLUE-ON-BOARD TECHNOLOGY:** Protects LEDs from damage and moisture in high-traffic environments.
- SIMPLIFIED OS: Streamlines setup, operation, and security.
- **HOT-SWAPPABLE MODULES:** Easy front-serviceable maintenance and includes spare tiles.



163"
DISPLAY



Direct View LED SMD + Glue-on-Board
PANEL



3840x2160
RESOLUTION



Product Description

The ViewSonic® LDE163G-182 is a 163" all-in-one Direct View LED (dvLED) display. It's part of our LDE Series, designed to deliver outstanding price-performance and simplified dvLED technology. This line is perfect for schools and businesses seeking a high-impact solution that maximizes their investment. The LDE163G-182 features an innovative, fully integrated All-in-One design with a simplified OS. Everything you need is built directly into the cabinets, which allows for easier installation and operation. The complete solution ships together and can be ordered with a single SKU, making setup a breeze. This display is also built to last. It uses durable Glue-on-Board technology with an IP54 dust and moisture rating and an IK06 impact rating. You can confidently use it in busy lobbies, classrooms, or conference rooms. With 600-nit brightness and a 6,500:1 contrast ratio, it delivers a vivid, exceptional viewing experience, representing a premier value in large-format displays.

Specifications

UPC	766907038149
CPU	RK3588
CPU	RK3588
Internal Speakers	8W (x2)
PC Resolution (max)	3840x2160
Mac® Resolution (max)	3840x2160
HDMI 2.0 (with HDCP 2.2)	1
HDMI 1.4 (with HDCP 1.4)	1
HDMI 1.4 Out (with HDCP 1.4)	1
3.5mm Audio Out	1
USB 3.0	2
RS232	1
Ethernet LAN (RJ45)	1
Voltage	100-120V/20A ~ 50/60Hz
Consumption (max)	2288W
Consumption (typical)	763W
Stand-by	<0.5W
Remote Control	Yes
Temperature	32-104° F (0 - 40° C)
Humidity (non-condensing)	20-80%
Physical (in.)	142.2 x 80.57 x 2.05
Physical with Wall Mount (in.)	142.2 x 80.57 x 2.43
Physical (mm)	3612 x 2046.4 x 52
Physical with Wall Mount (mm)	3612 x 2046.4 x 61.7
Recycle/Disposal	Please dispose of in accordance with local, state or federal laws.
Package Contents	Power Cord, LAN Cable, Remote Control, Installation Guide, Wall Mount, LD-MK-004, LD-MK-006
Regulations	cTUVus, FCC, RoHS
Display Type	Direct View LED
Screen Size	163"
Viewable Area (in.)	163
Light Source	DLED
LED Pitch Size (mm)	1.88
LED Grayscale	13 bits
Display Resolution	1920 x 1080
Refresh Rate	3,840Hz
Panel Type	Direct View LED SMD + Glue-on-Board

Aspect Ratio	16:9
Static Contrast Ratio	6,500:1
Backlight Life (Hours)	100,000
Brightness	600-nit
Viewing Angles	170° horizontal, 170° vertical
Impact Protection Rating	IK06 (Front)
Operation Rating	24/7

UPC: 766907038149



Contact Sales
ViewSonic.com
 888.881.8781
 email:
salesinfo@viewsonic.com