

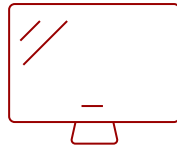
## PA503HD-2-S - 4000 LUMENS 1080P PROJECTOR WITH HDMI AND USB

### Key Features

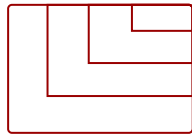
---



30 - 300 in. / 0.76 - 7.62 m  
**DISPLAY**



**PANEL**



VGA(640 x 480) to WUXGA\_RB(1920 x 1200) \*RB-  
Reduced Blanking  
**RESOLUTION**



**EFFORTLESS  
SETUP**

### Product Description

---

Help your best ideas look bigger and shine brighter with the ViewSonic® PA503HD projector. This state-of-the-art projector delivers up to 4,000 ANSI lumens of stunning brightness, 1080p FHD resolution and enormous images up to 300". A .65" DMD chip enables this high-brightness projector to create multimedia images with stunning contrast for enhanced clarity. Experience versatile multimedia connectivity with dual HDMI ports as well as a USB-A output port to power wireless HDMI dongles. No matter how you set up your projector, flexible features such as auto keystone correction help ensure a picture-perfect image every single time. Plus, with a laptop and USB cable, users can enjoy hassle-free maintenance and software updates.

### Specifications

---

<b>UPC</b>	766907039238
<b>Light Source</b>	DLP Lamp
<b>Display Resolution</b>	Full HD (1920x1080)
<b>Display Resolution</b>	1920 x 1080
<b>Brightness (Lumens)</b>	4,000 ANSI
<b>Screen Size</b>	30 - 300 in. / 0.76 - 7.62 m
<b>Throw Distance</b>	1m-10m (100"@3.28m)
<b>Throw Ratio</b>	1.48-1.62
<b>Keystone</b>	Vertical (+/- 40°)
<b>Lens</b>	1.1x optical zoom
<b>Light Source (watt)</b>	240
<b>Light Source Life, Normal (hours)</b>	4000
<b>Light Source Life, Dynamic Eco-Mode (hours)</b>	15000
<b>Color Depth</b>	1.07B Color (R/G/B 10bit)
<b>Dynamic Contrast Ratio</b>	22,000:1
<b>Aspect Ratio</b>	16:9
<b>Frequency Horizontal</b>	15K~102KHz
<b>Frequency Vertical</b>	23~120MHz
<b>PC Resolution (max)</b>	VGA(640 x 480) to WUXGA_RB(1920 x 1200) *RB-Reduced Blanking
<b>Mac® Resolution (max)</b>	480i, 480p, 576i, 576p, 720p, 1080i, 1080p
<b>3.5mm Audio Out</b>	1
<b>3.5mm Audio In</b>	1
<b>Control (RS232)</b>	1
<b>HDMI 1.4 (with HDCP 1.4)</b>	2
<b>Internal Speakers</b>	3W (x1)
<b>Voltage</b>	100-240V+/- 10%, 50/60Hz AC
<b>Consumption (typical)</b>	295W
<b>Stand-by</b>	<0.5W
<b>Physical Controls</b>	Keypad, Power key
<b>On Screen Display</b>	Display, Image, Power Management, Basic, Advanced, System, Information (See user guide for full OSD functionality)
<b>Temperature</b>	32-104° F (0 - 40° C)
<b>Kensington Lock Slot</b>	1
<b>Net (lbs)</b>	6.0
<b>Gross (lbs)</b>	8.4
<b>Net (kg)</b>	2.7

<b>Gross (kg)</b>	3.8
<b>Packaging (in.)</b>	15.8 x 9.2 x 6.6
<b>Physical (in.)</b>	12.2 x 13.3 x 4.5
<b>Packaging (mm)</b>	400.0 x 337.0 x 168.0
<b>Physical (mm)</b>	309.0 x 234.0 x 115.0
<b>Regulations</b>	FCC (including ICES003), cTUVus, NOM, TUV-Rheinland S Mark
<b>Package Contents</b>	PA503W projector, power cable, VGA cable, laser remote control with batteries, Quick Start Guide
<b>Warranty</b>	*Refurbished. 30-day DOA policy for full refund, with a 90-day repair warranty on parts and labor.
<b>Recycle/Disposal</b>	Please dispose of in accordance with local, state or federal laws.

UPC: 766907039238



**4,000 LUMENS  
AND 1080P RESOLUTION**



**SEAMLESS GAMEPLAY**  
16ms Latency for Smoother Images

**Contact Sales**  
[ViewSonic.com](http://ViewSonic.com)  
 888.881.8781  
 email:  
[salesinfo@viewsonic.com](mailto:salesinfo@viewsonic.com)