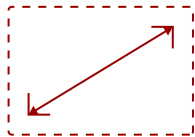
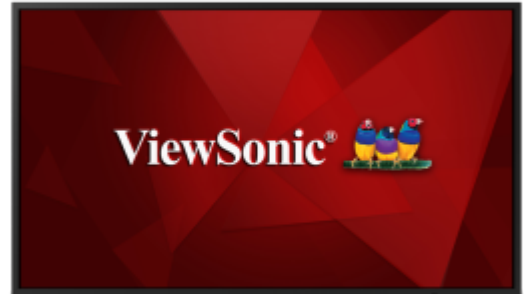




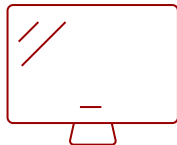
CDE4320 - 43" DISPLAY, 3840 X 2160 RESOLUTION, 350 CD/M2 BRIGHTNESS

Key Features

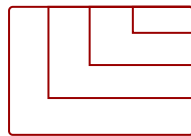
- Ultra HD Resolution
- Powerful All-in-One SoC Platform
- Embedded LAN and Optional Wireless Connectivity
- Reliable 24/7 Operation Rating
- Continuous Display Maintenance



43"
DISPLAY



IPS-Type
PANEL



RESOLUTION



Product Description

The ViewSonic® CDE4320 is a 43" (42.51" viewable) premium 4K large format presentation display purpose-built to deliver eye-catching imagery for hotels, restaurants, retail, business, and more. With stunning 3840x2160 resolution, 350-nit high brightness, wide viewing angles, and dual 10W speakers, this display provides immersive, high-impact messaging wherever needed. In addition to HDMI and DVI inputs to connect with various high definition devices, this display utilizes an integrated multi-core processor and 16GB of internal memory, allowing customers to playback multimedia content via USB without the need for a PC. To make life even easier, the bundled vController software offers easy maintenance and intuitive interfaces for remote management via a PC server or laptop, and its flicker-free and blue light filter technologies help provide a comfortable viewing environment.

Specifications

More Information

UPC	766907003994
Media Player Type	Yes

CPU	Quad Core - Cortex A73 + A53
CPU Processor Speed	1.4GHz
Memory	3GB DDR4
Storage	16GB eMMC
Built-in Software	OSD / Remote Control
Internal Speakers	10W (x2)
HDMI 2.0 In	2
DVI-D	1
RCA Audio Out	1
3.5mm Audio In	1
USB 2.0	2
RS232	1
Ethernet LAN (RJ45)	1
IR in	1
IR out	1
Voltage	100-240 VAC +/- 10% Wide Range, 50-60Hz +/-3 Hz
Consumption (max)	85W
Consumption (typical)	70W
Stand-by	<0.5W
Temperature	32-104° F (0 - 40° C)
Humidity (non-condensing)	10-80%
Net Without Stand (lbs)	23.2
Gross (lbs)	29.8
Net Without Stand (kg)	10.5
Gross (kg)	13.5
Packaging (in.)	42.1 x 26.1 x 6.0
Physical Without Stand (in.)	38.2 x 21.9 x 3.3
Packaging (mm)	1070.0 x 663.0 x 153.0
Physical Without Stand (mm)	969.9 x 558.3 x 84.6
VESA Compatible	400 x 200 mm
Screw Size	M6
AV Control	AMX Certified, Crestron Certified (Version 1.0), Extron Certified
Warranty	Three (3) years from the date of first consumer purchase for parts and labor.
Recycle/Disposal	Please dispose of in accordance with local, state or federal laws.
Package Contents	CDE4320, Remote control with batteries, Quick Start Guide, Power cable, HDMI Cable and RS232 cable
Regulations	cULus, FCC, Energy Star, RoHS

Screen Size	43"
Viewable Area (in.)	42.51
Light Source	DLED
Display Resolution	3840 x 2160
Panel Type	IPS-Type
Aspect Ratio	16:9
Static Contrast Ratio	1,100:1
Backlight Life (Hours)	40,000
Brightness	350 cd/m2
Response Time (Typical GTG)	6ms
Viewing Angles	178° horizontal, 178° vertical
Panel Surface	Hard Coat - Anti-Glare, 3% Haze, 2H with anti-glare treatment

UPC: 766907003994



Contact Sales
ViewSonic.com

888.881.8781
 email:
salesinfo@viewsonic.com