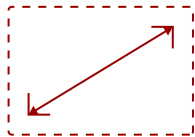


LS700HD - 1920 X 1080 RESOLUTION, 3,500 ANSI LUMENS, 1.13~1.47 THROW RATIO

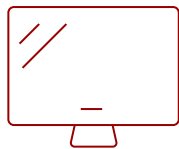
## Key Features

---

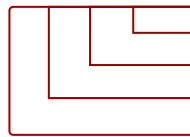
- Laser Phosphor Technology
- Full HD 1080p Resolution
- Bright Images in any Environment
- Horizontal and Vertical Keystone Correction
- Reduced Input Latency



60 - 300 in. / 1.5 - 7.6 m  
**DISPLAY**



**PANEL**



1920 x 1080  
**RESOLUTION**



## Product Description

---

With incredible Full HD resolution and a high brightness of 3,500 lumens, the ViewSonic® LS700HD laser projector delivers stunning home entertainment: day or night, in bright rooms or dark. Utilizing the latest laser light technology that lasts up to 20,000 hours, the LS700HD delivers long-term enjoyment for movies, games, and other multimedia entertainment. What's more, with high brightness, SuperColor™ technology, and room-filling sound, this projector provides an incredibly immersive home theater experience in nearly any room or environment. Set-up is a breeze too: 1.3x optical zoom and versatile connectivity options allow for more flexible mounting and easy installation. For an amazing home theater viewing experience with lifelike color and razor-sharp details, the LS700HD delivers.

## Specifications

---

### More Information

**UPC**

766907981216

**Light Source**

DLP Laser

<b>Display Resolution</b>	Full HD (1920x1080)
<b>Display Resolution</b>	1920 x 1080
<b>Brightness (Lumens)</b>	3,500 ANSI
<b>Screen Size</b>	60 - 300 in. / 1.5 - 7.6 m
<b>Throw Distance</b>	4.9 - 28.8 ft / 1.5 - 8.8 m
<b>Throw Ratio</b>	1.13~1.47
<b>Keystone</b>	Vertical (+/- 40°) / Horizontal (+/- 40°)
<b>Lens</b>	1.3x Manual optical zoom / manual optical focus
<b>Light Source Life, Normal (hours)</b>	20000
<b>Light Source Life, Dynamic Eco-Mode (hours)</b>	20000
<b>Color Depth</b>	1.07B Color (R/G/B 10bit)
<b>Dynamic Contrast Ratio</b>	3,000,000:1
<b>Aspect Ratio</b>	16:9
<b>Input Lag</b>	37ms
<b>Frequency Horizontal</b>	15K~102KHz
<b>Frequency Vertical</b>	23~120Hz
<b>PC Resolution (max)</b>	1920 x 1080
<b>Mac® Resolution (max)</b>	1920 x 1080
<b>USB 2.0 Type A</b>	1
<b>Ethernet LAN (RJ45)</b>	1
<b>3.5mm Audio Out</b>	1
<b>3.5mm Audio In</b>	1
<b>Control (RS232)</b>	1
<b>HDMI 1.4 (with HDCP 1.4)</b>	2
<b>VGA In</b>	2
<b>VGA Out</b>	1
<b>Composite RCA Video In</b>	1
<b>Mini USB</b>	1
<b>Internal Speakers</b>	2W (x1)
<b>Voltage</b>	100-240V +/- 10%, 50/60Hz AC
<b>Consumption (typical)</b>	260W
<b>Stand-by</b>	<0.5W
<b>Physical Controls</b>	Power, keystone/arrow keys, left/blank, menu/exit, right/panel key lock, mode/enter, auto, source
<b>On Screen Display</b>	Display, Image, Power Management, Basic, Advanced, System, Information (See user guide for full OSD functionality)
<b>Temperature</b>	32-104° F (0 - 40° C)

<b>Humidity (non-condensing)</b>	0-90%
<b>Kensington Lock Slot</b>	1
<b>Net (lbs)</b>	15.7
<b>Gross (lbs)</b>	20.1
<b>Net (kg)</b>	7.1
<b>Gross (kg)</b>	9.1
<b>Packaging (in.)</b>	19.7 x 6.2 x 15.8
<b>Physical (in.)</b>	15.6 x 6.2 x 12.4
<b>Packaging (mm)</b>	500.4 x 157.5 x 401.3
<b>Physical (mm)</b>	396.0 x 157.0 x 314.0
<b>Regulations</b>	FCC, cTUVus, ROHS
<b>Package Contents</b>	LS700HD Projector, Power Cable, VGA Cable, Remote Control, Quick Start Guide
<b>Warranty</b>	Three-year limited warranty on parts and labor, 1st year free Express Exchange® service. (One year Express Exchange Service requires product registration).

UPC: 766907981216



**Contact Sales**

[ViewSonic.com](http://ViewSonic.com)

888.881.8781

email:

[salesinfo@viewsonic.com](mailto:salesinfo@viewsonic.com)