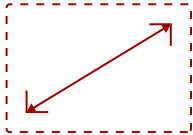


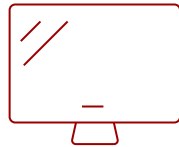
# VIEWSONIC 22" 1080P 10-POINT TOUCH MONITOR WITH 24/7 OPERATION, VGA, HDMI, DISPLAYPORT | TD2201-XF

## Key Features

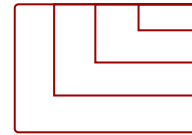
- **VERSATILE TOUCH MONITOR:** 22 inch Full HD (1920x1080p) IPS open-frame display built for commercial integration with thin bezels and a 60Hz refresh rate.
- **PCAP TOUCH TECHNOLOGY:** Projected Capacitive (PCAP) technology delivers a smooth, accurate touch experience with every tap, pinch and swipe.
- **EXTENDED 24/7 FUNCTIONALITY:** Rated for 24/7 continuous operation with an advanced cooling system and burn-in prevention for graphics-rich content.
- **ADVANCED DURABILITY:** 3mm-thick glass with 7H hardness resists scratches and hard knocks while IP65-rated sealing keeps out dust, splashes and moisture.
- **OPEN FRAME DESIGN:** 75x75mm and 100x100mm mounting options enable secure installation in portrait or landscape orientations.
- **FLEXIBLE CONNECTIVITY:** VGA, HDMI and DisplayPort inputs support a wide range of commercial deployments and source devices.



22  
**DISPLAY**



**PANEL**



1920 x 1080  
**RESOLUTION**

## Product Description

The ViewSonic TD2201-XF is a 22-inch open-frame touch monitor purpose-built for commercial integration in kiosks, ATMs, vending machines and food service environments. IP65-rated sealing protects against dust, splashes and moisture, backed by 24/7 continuous operation so deployments stay up and running around the clock. PCAP touch technology with 10-point touch delivers accurate, responsive performance across food service and industrial installations. With VGA, HDMI and DisplayPort inputs and flexible 75x75mm and 100x100mm VESA mounting, the TD2201-XF is designed to integrate cleanly into virtually any commercial setup.

## Specifications

More Information	
<b>UPC</b>	766907029963
<b>Screen Size</b>	22
<b>Viewable Area (in.)</b>	21.5
<b>Display Resolution</b>	1920 x 1080
<b>Display Resolution</b>	Full HD (1920x1080)
<b>Static Contrast Ratio</b>	1,000:1

<b>Light Source</b>	LED
<b>Brightness</b>	210 cd/m <sup>2</sup>
<b>Aspect Ratio</b>	16:9
<b>Response Time (Typical GTG)</b>	22ms
<b>Viewing Angles</b>	178° horizontal, 178° vertical
<b>Backlight Life (Hours)</b>	50,000
<b>Panel Surface</b>	7H Scratch Resistant Surface Hardness
<b>PC Resolution (max)</b>	1920 x 1080
<b>Mac® Resolution (max)</b>	1920 x 1080
<b>USB Type B</b>	1
<b>3.5mm Audio In</b>	1
<b>HDMI In</b>	1
<b>VGA</b>	1
<b>DisplayPort</b>	1
<b>Touch Technology</b>	Projective Capacitive
<b>Touch Points</b>	PCT10 points touch supported
<b>Consumption (typical)</b>	20.34W
<b>Consumption (max)</b>	22.34W
<b>Voltage</b>	AC-DC power (Input: 100V~240V / Output: DC 12V, 4.0 A)
<b>Stand-by</b>	1.69W
<b>Power Supply</b>	External
<b>Cable Organization</b>	No
<b>Physical Controls</b>	Auto, Menu, Left, Right, Exit, Power
<b>On Screen Display</b>	Contrast/Brightness, Input Select, Audio Adjust, Color Adjust, Information, Manual Image Adjust, Setup Menu, Reset
<b>Temperature</b>	32-122° F (0-50° C)
<b>Humidity (non-condensing)</b>	5-90%
<b>VESA Compatible</b>	75 x 75 / 100 x 100 mm
<b>Net (lbs)</b>	10.8 lbs
<b>Net Without Stand (lbs)</b>	10.8 lbs
<b>Gross (lbs)</b>	13.7 lbs
<b>Net (kg)</b>	4.9 kg
<b>Net Without Stand (kg)</b>	4.9 kg
<b>Gross (kg)</b>	6.2 kg
<b>Packaging (in.)</b>	23.03 x 17.32 x 5.12 in.
<b>Physical (in.)</b>	20.16 x 11.94 x 1.88 in

<b>Physical Without Stand (in.)</b>	20.16 x 11.94 x 1.88 in
<b>Packaging (mm)</b>	585 x 440 x 130 mm
<b>Physical (mm)</b>	511.9 x 303.4 x 47.8 mm
<b>Physical Without Stand (mm)</b>	511.9 x 303.4 x 47.8 mm
<b>Package Contents</b>	HDMI Cable x 1 USB A/B cable x 1 AC/DC adapter x 1 3-pin power cord x 1 Quick Start Guide x 1
<b>Recycle/Disposal</b>	Please dispose of in accordance with local, state or federal laws.
<b>Warranty</b>	Three-year limited warranty on parts, labor and backlight

UPC: 766907029963



### Contact Sales

[ViewSonic.com](http://ViewSonic.com)

888.881.8781

email: [salesinfo@viewsonic.com](mailto:salesinfo@viewsonic.com)