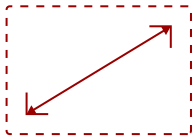
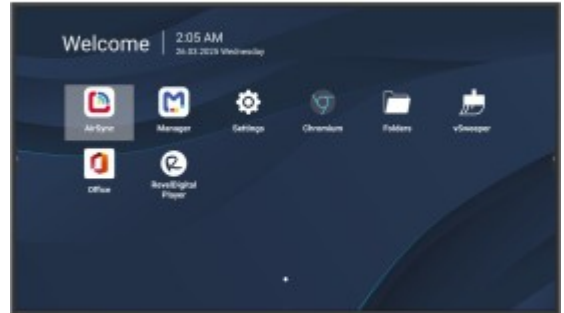


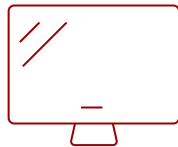
43" 4K COMMERCIAL DISPLAY WITH 350 CD/M² BRIGHTNESS, 16/7 OPERATION, HDMI, USB-C, CONTENT SHARING, REMOTE MANAGEMENT | CDE4314

Key Features

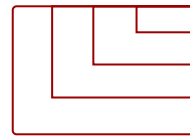
- SEAMLESS AV INTEGRATION: Certified for Q-SYS, compatible with Crestron, Extron, and AMX.
- STUNNING VISUALS: Enjoy vivid 4K detail with bright reflection-free viewing.
- FAST STARTUP: Boots in seconds so meetings start on time, every time.
- FREE FLEET CONTROL: Easily manage your displays remotely with free ViewSonic Manage
- SIMPLE CONNECTIVITY: One USB-C cable plus HDMI for quick, easy laptop connections.



43"
DISPLAY



ADS
PANEL



RESOLUTION



Product Description

The ViewSonic CDE14 series is a high-performance 4K display purpose-built for Corporate Offices, Higher Education, and the Public Sector. Featuring a 25% high-haze anti-glare coating and a 350-nit "sweet spot" for eye comfort, it ensures reflection-free clarity in Retail Boutiques and Professional Services. This series eliminates technical friction with Single-Cable USB-C connectivity, AirSync™ wireless casting, and a secure Android 14 platform. Unlike standard 16/7 displays that require expensive licenses or proprietary hardware, the CDE14 offers a Certified Pro-AV Ecosystem (Crestron, Extron, Q-SYS) and includes ViewSonic Manager™ Basic for free, centralized fleet control. With Intelligent Signal Failover and a fast "Warm Boot" startup, your communications remain active and efficient. Eco-certified, the CDE4314 delivers a premium, secure experience with a significantly lower total cost of ownership than leading competitors.

Specifications

[More Information](#)

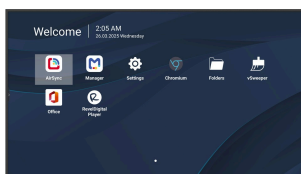
UPC

766907036268

OS	Android 14 AOSP
GPU	ARM Mali-G57 MC1
CPU	MT9681 (ARM Cortex-A73 x4)
Memory	4GB DDR4
Storage	32GB
Photo	BMP, GIF, JPEG, PNG
Video	AVI, FLV, F4V, MKV, MOV, MP4, MPG, WEBM
Music	AAC, APE, FLAC, PCM, MP3, OGG, WAV
HDMI 2.1	480i, 480p,720p,1080i,1080p, 4K@60Hz
HDMI Out	4K@60Hz
USB-C	480p, 576p, 720p, 1080p, 4K@60Hz
Internal Speakers	10W (x2)
Speaker Position	Bottom
HDMI 2.1 In	3
3.5mm Audio Out	1
SPDIF	1
USB 2.0	2
USB Type C	15W x 1
RS232	1
Ethernet LAN (RJ45)	1
WIFI Module Slot	1
Voltage	100-240 VAC +/- 10% Wide Range, 50-60Hz +/-3 Hz
Consumption (max)	136.1W
Consumption (typical)	38.2W
Stand-by	<0.5W
Temperature	32-104° F (0 - 40° C)
Humidity (non-condensing)	20-80%
Net (lbs)	20.06
Gross (lbs)	28.75
Net (kg)	9.1
Gross (kg)	13.0
Packaging (in.)	41.57 x 24.88 x 6.14
Physical (in.)	37.98 x 21.75 x 2.81
Packaging (mm)	1056 x 632 x 156
Physical (mm)	964.6 x 552.5 x 71.4
VESA Compatible	200 x 200 mm

Screw Size	M6
Screw Length (mm)	12
AV Control	AMX Certified, Extron Certified, Crestron Connected
Warranty	Three-year limited warranty on parts, labor and backlight
Recycle/Disposal	Please dispose of in accordance with local, state or federal laws.
Package Contents	CDE4314 Commercial Display, Remote control with batteries, Quick Start Guide, Power cable (3m), HDMI Cable (3m), Wall Mount Screws (x4), AAA battery (x2) and RS232 adapter
Regulations	cTUus, FCC, Energy Star 8.0, RoHS
Wifi	VB-WIFI-005 adapter, 802.11AX + Bluetooth 5.2
Screen Size	43"
Viewable Area (in.)	42.5
Orientation	Landscape
Colors	1.07B
Color Space Support	8 bit + FRC
Light Source	DLED
Display Resolution	3840 x 2160
Refresh Rate	60Hz
Panel Type	ADS
Aspect Ratio	16:9
Static Contrast Ratio	1,200:1
Dynamic Contrast Ratio	2,000:1
Backlight Life (Hours)	30,000
Brightness	350 cd/m2
Response Time (Typical GTG)	8ms
Bezel Width (in.)	0.39
Bezel Width (mm)	9.9
Viewing Angles	178° horizontal, 178° vertical
Panel Surface	Anti-Glare type, Hard-coating (3H), Haze 25%
Operation Rating	16/7

UPC: 766907036268



Contact Sales

ViewSonic.com

888.881.8781

email: salesinfo@viewsonic.com