

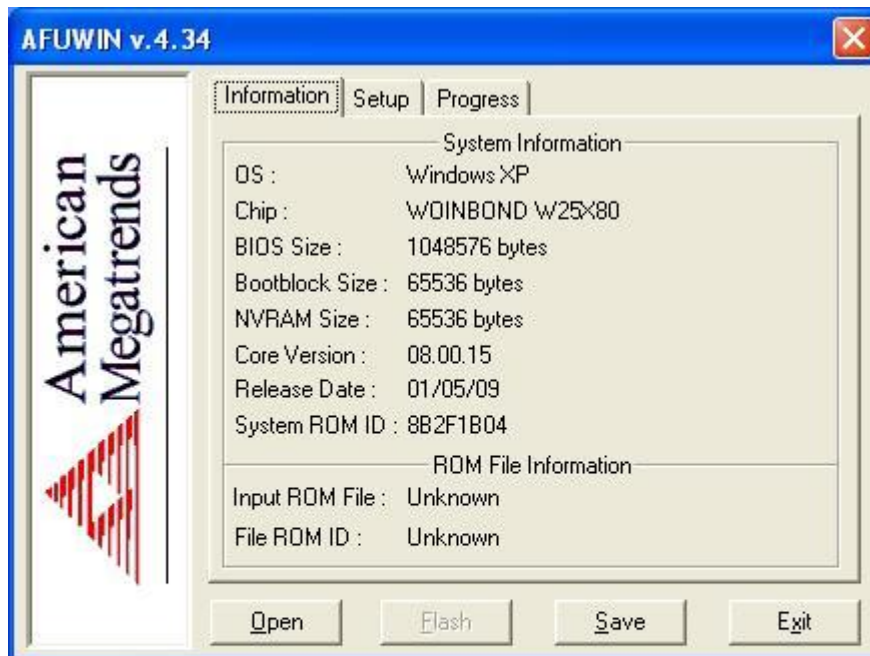
FLASH BIOS SOP

<FLASH BIOS in DOS Mode >

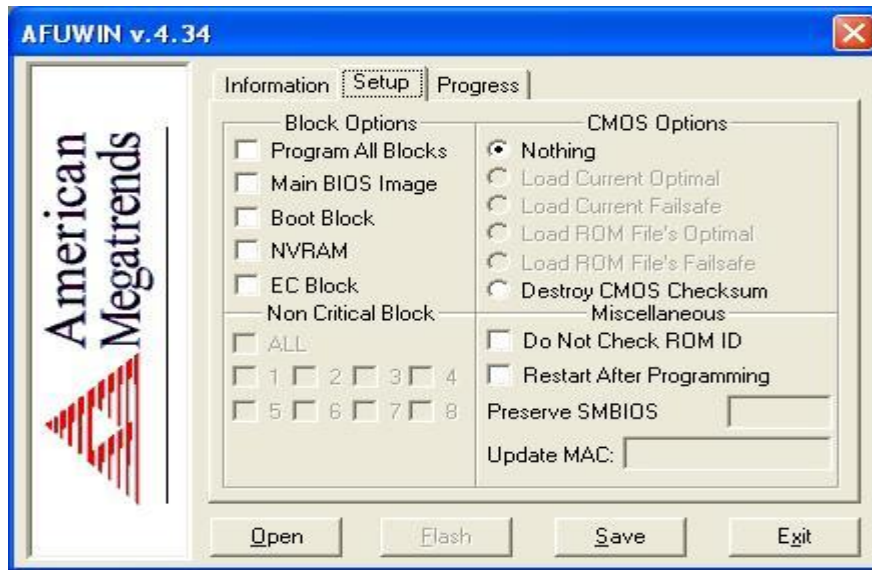
1. Execute **DOSFLASH.bat** in DOS mode.
2. After finishing flashing BIOS, Please power off system and disconnect power adapter.

<FLASH BIOS in OS WINDOS 7 >

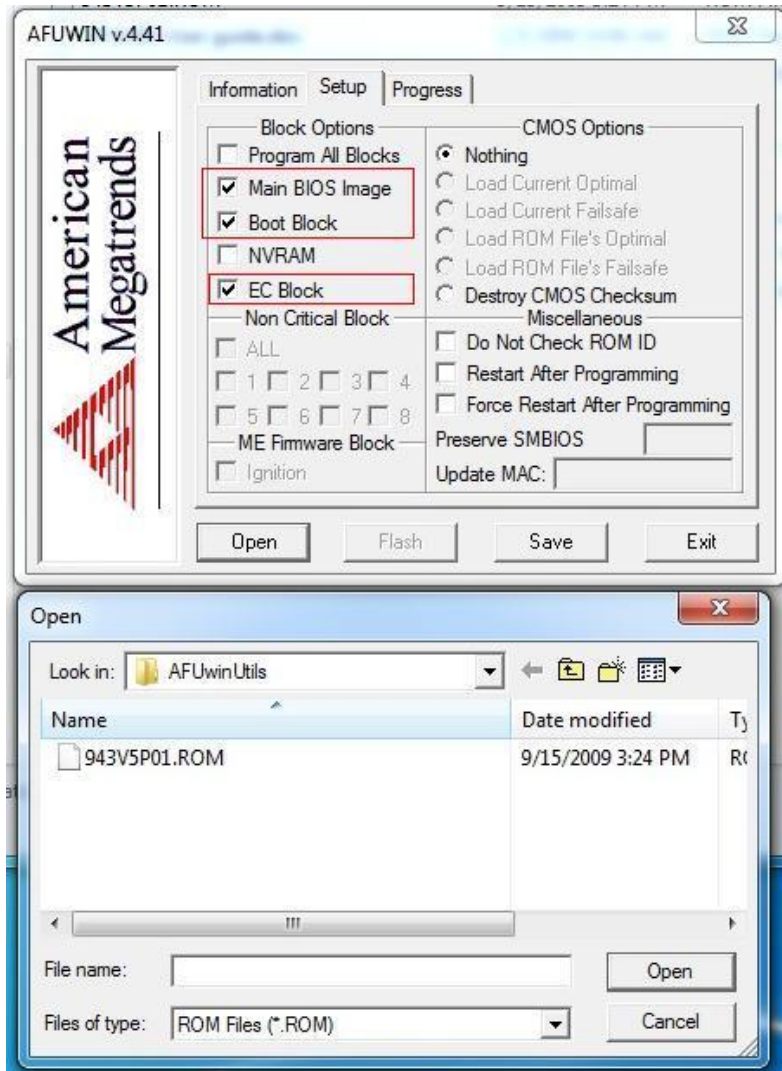
1. Execute AFUWIN.exe. You can see the following diagram.



2. Select Setup menu.



3. Click on “OPEN” button to open new BIOS bin file to flash. Please select “Main BIOS image”, “Boot Block”, “EC Block” and “Restart after programming”. Please refer to the following diagram.



4. Click on “Flash” button. It will begin to program the BIOS into flash ROM. After flashing BIOS successfully, please power off system and disconnect power adapter.

